

Ed. Bauer Host to Tri-County Cagers; Fred Cone Speaker

About 125 athletes, school principals and other guests from Kewaskum, Campbellsport and Lomira were guests of Ed. "Mush" Bauer at the annual sports dinner at Bauer's Hotel in Campbellsport last Thursday evening.

Tri-County conference rivalries were forgotten as coaches and cagers tied into fried chicken. The banquet is sponsored annually by general Mr. Bauer, a sports enthusiast. This year Lomira was added to the guest list for the first time. One of the speakers at the dinner was Fred Cone, fullback of the Green Bay Packers. Master of ceremonies was Floyd Garne, police justice of Cudahy. He was introduced by Bauer following the dinner.

The Campbellsport High school basketball squad and their coach, Dan O'Brien, were congratulated upon winning the conference championship. Last year this honor was enjoyed by Kewaskum. This year Coach Ernie Mitchell's team copped second.

Atty. J. P. McGalloway, Fond du Lac, was the main speaker and challenged the boys as follows: "You have succeeded on the basketball court; now do the same thing in life." Cone praised the athletes and related some of his experiences as a prep, college and professional football player.

Short talks were given by Leo Lange, Campbellsport; Clifford Rose, Kewaskum; Arthur Lehman, Lomira, all high school principals; Herman Paas, Campbellsport; L. N. Peterson, Kewaskum, and Edward Tolman, Lomira. Special guests included Milton L. Meister, West Bend, Washington county judge, and Charles Broughton, Sheboygan. Pictures were taken of Coach Mitchell and Russ Rodenbeck, captain of the Kewaskum team, with Fred Cone and photos of other coaches and guests were also snapped. Some of the pictures appeared in neighboring newspapers. Ted Schmidt of Kewaskum led a cheer, "Was Ist Das?" and community singing.

And "Mush" proved that he has a heart to match his 180 pound frame. All told 213 guests were invited and all but three showed up to help consume over 300 pounds of chicken. "Mush" was like a mother hen, seeing that all had enough to eat and picked up the tab for the entire event.

Village 1st to Exceed Red Cross Quota

The village of Kewaskum again was first in Washington county to exceed its quota in the Red Cross drive. The village went over its quota of \$800 on Wednesday, announcement was made by Chairman Charles Sparks on Friday morning.

MRS. MUCKERHEIDE GIVES TALK ON PANAMA TO SOCIETY

The Ladies' Altar society of Holy Trinity church held their social on Tuesday evening in the hall.

Mrs. Sylvester Muckerheide gave a very interesting talk on her visits to Panama, the people there, their manner and dress, customs, in general their entire way of living and had on display many articles and wearing apparel she brought back from her trips. Her talk was very inspiring.

A shrine, honoring St. Joseph, was set up by Mrs. Norman Jaeger. Because of Lent, only coffee was served. The remainder of the evening was spent doing mission work.

SIX COUNTY YOUNG MEN INDUCTED THIS MONTH

Six Washington county young men left from Hartford recently, representing the draft quota for the month of March. None of the men reside in Kewaskum. Inducted were:

Vincent Reed, 18, R. 1, Hartford; Howard Justman, 18, West Bend; Wilfred Gutschewitz, 21, P. 3, Hartford; William Bohn, 21, West Bend; Edward Fechter, 20, R. 1, West Bend, and Donald Schickert, 22, R. 2, West Bend.

Sylvester Serwe's Car Badly Damaged by Fire

A Mercury car owned by Sylvester Serwe, Kewaskum tavern-keeper, was almost completely damaged by fire early Thursday of this week on the parking lot at the rear of his tavern. The blaze was discovered shortly before 6 a. m. by a passerby on his way to work and the fire department was called to put out the flames.

The interior of the auto was completely burned out and the exterior also was damaged. Only the motor, tires and front end escaped damage. Serwe had parked his car on the lot near his garage Wednesday night and no sign of fire was detected at the time. Cause of the blaze was not determined.

This was the third fire near the same scene within the past two or three years. About two years ago a small shed owned by Joe Eberle on the same property burned down and last year next door a car owned by Frank Felix also caught fire.

Atty. Buckley Withdraws From County Court Race

Atty. Lester A. Buckley of Hartford, who last week Tuesday was nominated with incumbent Judge Milton L. Meister as a candidate for the post of county court judge, has announced his withdrawal from the court race, the Statesman was informed this week. In declining to accept the nomination, Atty. Buckley has requested that his name not be placed on the ballot in the April 6th election.

Buckley polled the second largest number of votes in the three-cornered race, in which Atty. Arthur C. Snyder, also of Hartford, was eliminated.

Following is a statement Atty. Buckley issued at the time he declined to accept the nomination:

"I wish to express my sincere thanks to the voters of Washington county who supported my candidacy for county judge at the primary election last Tuesday.

"I am particularly thankful to the voters of my home community for their splendid support. The fact that I did receive such a fine endorsement from the people of my home community has been most gratifying to me.

"I have interpreted the results of last Tuesday's primary as an expression of the desire on the part of the people of Washington county that Judge Meister continue in office. Accordingly and pursuant to a provision of the Wisconsin statutes, I have instructed the county clerk to remove my name from the ballot to be submitted to the voters at the April election."

TUITION CHECKS MAILED TO SCHOOLS BY COUNTY CLERK

County Clerk Anton P. Starnal revealed Wednesday that he had mailed checks during the week to the various high schools who accepted Washington county students as tuition students during the 1952-1953 school year. High school students of the county attended 12 different high schools as tuition students.

The county school committee also approved tuition payment of \$9.42 per week for each tuition student for the 1952-1953 school year.

Kewaskum High school received an amount of \$33,363.50.

Checks totalling \$39,421.91 were also issued by the county clerk to the various municipalities that provide transportation for their high school students. Districts in this area received the following amounts: Town of Farmington, \$3,270.72; town of Kewaskum, \$1,295.86; town of Wayne, \$3,161.98.

COUNTY SEEKS BIDS ON CARS FOR SHERIFF'S DEPARTMENT

County Clerk Anton P. Starnal has requested that we publish an item informing automobile dealers that sealed bids for five new 1954 five-passenger, two-door automobiles for the Washington county sheriff's department will be received at his office up to 2 p. m. on Thursday, Mar. 25. Details and specifications are listed in a legal notice published on page four of his issue.

State Beagle Club Meets Here, Elects

The business meeting of the Wisconsin Beagle club was held in the municipal building in Kewaskum Sunday. About 35 members of the club, most of them from a distance, attended. More would have been present, except for hazardous roads.

Officers elected were Joe Eberle, Kewaskum, president; Tom Heintz, Hartford, vice-president; E. A. Kopp, Johnson Creek, secretary-treasurer; John L. Schaefer, Menomonee Falls, and Walter Hunhold, Milwaukee, field marshalls.

Members voted 100 per cent to hold the annual field trial and bench show in Kewaskum again this year. These events, which are held in the fall, have by now held at Kewaskum now for almost 30 years.

Judges for the fall trial will be St. Sannon of Illinois and Al Steink of Michigan. Show judge will be Joe Eberle.

Car Crashes Into Porch, Youth Hurt

Jim Weiss, 17, of 913 Salisbury avenue, Barton, sustained severe head injuries and cuts and bruises last Friday night in a serious traffic accident in this village. The 1949 model car, owned by his father, Anthony Weiss, was badly wrecked.

Weiss was driving north on Highway 45 (Fond du Lac ave.) and had just entered the village limits when he lost control of his car. According to Chief of Police Gerry Guttman, the Weiss car crossed the highway, tore down a fence and hit a light pole and sign in front of Billy's Car Hop, and careened into the front porch of the Ernie Leonardelli home.

Weiss was alone in his car when the mishap occurred at about 10:10 p. m. The auto crashed into the concrete footing of the porch which caused most of the damage and injury. Weiss was unconscious when he was removed from the car and was taken to St. Joseph's hospital, West Bend, in the firemen's ambulance.

The porch of the Leonardelli home was also damaged and members of the family received a jolt when the car plowed into the porch. The vehicle was jammed between the porch and a small tree with the front end flattened against the porch steps.

SHERIFF ISSUES WARNING ON BEER SALES TO MINORS

Sheriff George Brugger of Washington county issued a warning to all tavernkeepers against selling beer to minors. He stated that his department has been plagued by so many complaints and so many young people have been or are being called into court for investigation that it will be necessary to make arrests for beer sales to minors to prevent future trouble.

The sheriff stated that this is the last warning to tavernkeepers regarding the sale of beer to minors before making arrests. The young people, after drinking beer, frequently become involved in trouble or automobile accidents and such incidents must cease for the protection of the young people and others.

WARNING TO CAR DRIVERS IN VILLAGE

Drivers of cars in Kewaskum are warned to slow down to the speed limit while passing through school zones. The speed limit in school zones, according to state law, is 15 miles per hour while school children are on the grounds. Most drivers are exceeding this limit especially on Main street (Highway 28) where it passes the parochial school, endangering the lives of the children. This is a final warning to drivers to obey the speed limit or arrests will follow.

Gerhard Guttman
Chief of Police

MARRIAGE LICENSE

Lyle W. Bartelt, Kewaskum, and Evelyn L. Olson, Rhinelander; wedding March 29.

Fr. La Buwi Deacon at First Evening Mass Held at Arena

The first evening mass to be celebrated in the Milwaukee archdiocese took place Thursday, Mar. 18, at 8 p. m. in the Milwaukee Arena, largest indoor assemblage place in the city. Archbishop G. Meyer offered the pontifical high mass in honor of the Blessed Mother in the Marian year, petitioning world peace. The Archdiocesan Union of Holy Name societies sponsored the ceremony.

Assisting the Archbishop were Msgr. James E. Kelly, rector of St. John's Cathedral, presbyter assistant; Fr. Francis C. La Buwi, pastor of Holy Trinity church, Kewaskum, deacon; and Fr. Stephen V. Labal, pastor of Holy Trinity, Racine, subdeacon; Fr. Peter Hildebrand, pastor of St. Mary's, Port Washington, and Fr. William J. Bronner, pastor of St. Anne's, Milwaukee, deacons of honor. Fr. Joseph Emmenegger and Raymond Long were masters of ceremonies.

This was a high honor bestowed on Father La Buwi as he was the first evening mass. An estimated 14,000 persons occupied every seat in the arena and hundreds of others stood in corners. An additional 6,000 were turned away. A number of people from Kewaskum and vicinity were among those in attendance.

The sermon was preached by Archbishop Meyer, and prayers were led by Msgr. F. P. Arnold, pastor of St. Rita parish, West Allis. The St. Francis Major Seminary choir, consisting of 265 voices, provided the music.

The program opened with a procession, consisting of the clergy, the honor and color guards, and the priests participating in the ceremonies. Fourth Degree Knights of Columbus formed the honor guard and the color guard and drill team of Catholic War Veterans of Chaplain Mathias Zerkas and Theodore Wagner posts presented colors. Harry S. Johnston, K. S. G., was the papal knight escort to the Archbishop.

Preceding the mass the assembly recited the prayer of the Holy Father for the Marian Year. Surmounting the main altar was an 18 foot statue of the Blessed Mother, the "Theme Madonna," specially made for the event. Replicas of the statue were given to everyone attending.

Fatal Mishap Driver Placed on Probation

Charged with negligent homicide following a crash between his car and a motorcycle on Highway 35, one-half mile south of Kewaskum, resulting in the death last September of a Milwaukee couple, James Douglas Brown, 28, of Fond du Lac, has been given a one-year probationary term in Washington county's circuit court. Sheriff George Brugger of West Bend announced last week.

Circuit Judge William O'Connell imposed the probationary sentence at the request of Defense Counsel John F. O'Brien following a jury trial. Brown was arrested by Washington county authorities a few days after the crash which occurred at 10:10 p. m. Saturday, Sept. 12.

Brown was driving north and a motorcycle driven by George Hartert, 37, Milwaukee, was heading south with Mrs. Hartert as passenger. The two vehicles collided. Mrs. Ha Fay Hartert, 34, died five hours after the collision at the West Bend hospital. Her husband died on Sept. 17 without knowing his wife had succumbed.

Another Fond du Lac man, Robert Cutter, 27, was following Brown at the time, authorities reported. Cutter attempted to avoid hitting the two vehicles and lost control of his machine. It plunged into a ditch and rolled over.

Sheriff Brugger reported at the time that Brown's auto had crossed the center line of the road just prior to the impact.

The sheriff named Cutter on a reckless driving count. His case has not been disposed of, according to reports.

New Proprietor at Republican Hotel

The Republican Hotel in Kewaskum changed hands again this week. The hotel and tavern, which was operated for the past eight and one-half months by Mrs. Mary Jilbert of Milwaukee, has been taken over by William E. Meredith of 328 West Hope avenue, Milwaukee.

Mrs. Jilbert and her husband, Capt. Charles Jilbert, have returned to Milwaukee. Capt. Jilbert who has a ship on the Great Lakes during the spring, summer and fall months, operated the hotel with his wife during the past winter. He soon will be returning to duty on his ship.

Mrs. Jilbert took over the operation of the hotel on July 1, 1953 from Mrs. Loraine Guth, also of Milwaukee.

The new proprietor, Mr. Meredith, is married and has a family, and they accompanied him here. He formerly held a position as a production engineer in Milwaukee. Prior to that he operated a sweet shop for a time.

Bernard Seil Observes Thirty Years With Firm

Bernard J. Seil, Kewaskum, this month is observing his 30th anniversary with the L. Rosenheimer firm and is beginning his 31st year as an employee. He began his work as a salesman on the road for Rosenheimer's in 1924 when he visited farmers with a Model "T" Ford.

In those early days Seil was selling the original John Deere tractor, which will be remembered by older residents. Some of his early customers who owned this early model hand-cranked tractor were Conrad Bier, Frank Kloebusch and Charles Breseman of Kewaskum rural route. In that era farm power was provided primarily by horses and the old timers hesitated to change over to tractors.

Seil recalls that most of the machinery sold in the days when he first began working for Rosenheimer's was horse-drawn equipment. Rosenheimers are celebrating their 80th year in business this year so Seil feels that he has a double occasion to celebrate.

Carl Backhaus, who has been with the Rosenheimer firm for 22 years, has replaced Seil as salesman, while the latter now is in charge of the repair parts department and also handles sales of the stores farm equipment and supplies.

MICHAEL THELEN

Michael Thelen, 55, a retired Campbellsport tavern and hotel operator, died at 6 p. m. Sunday, March 14, at the Park Avenue Rest home, Fond du Lac, after an illness of several months.

Mr. Thelen conducted the Campbellsport business until a few years ago. He was born at Appleton Dec. 15, 1890, and was married June 20, 1885 to Miss Elizabeth Heisel, Appleton, who died many years ago. Surviving are six grandchildren.

Funeral services were held Wednesday at 9 a. m. at St. Matthew's church, Campbellsport, the Rev. Peter E. Schwamb officiating. Burial was in St. Joseph's cemetery, Appleton.

DAYS OF RECOLLECTION HELD AT HOLY TRINITY

A men's day of recollection was held at Holy Trinity church last Sunday and on the previous Sunday the ladies' recollection took place. Both were conducted by a Capuchin father. Over 100 ladies and about 65 men attended the recollections.

The day began with Holy Mass and Communion at 8 a. m. and closed with a Holy Hour at 3 p. m. The recollections included attending the 10 o'clock mass, conferences, Stations of the Cross and the serving of breakfast and dinner.

HOSPITAL NEWS

Wayland Tessar, Kewaskum, was a patient at St. Joseph's hospital, West Bend, several days the past week for medical observation.

Dr. Kauth Moves Dental Practice to West Bend

Because of the necessity of vacating his office above the Factory Outlet Store on Fond du Lac ave. in Kewaskum and being unable to find suitable office space here, Robert T. Kauth, D. D. S., this week moved his dental practice to West Bend. He began practicing in that city on Monday.

Dr. Kauth will be located in the Security building at West Bend and he asks his patients to continue their professional services there. However, Dr. Kauth, his wife and family will continue to make their residence in Kewaskum.

"Doc" wishes to thank the public for their patronage in the past and hopes to be of service to them in the future.

Local Firemen at Badger Banquet

The 1954 mid-winter business meeting and banquet of the Badger Firemen's association at Marty Zivko's ballroom in Hartford Sunday was attended by about 400 firemen from twenty surrounding communities. The event was the usual big success even though the highways were in a slippery condition in spots.

Some 20 members of the Kewaskum department attended the evening banquet. Most of them traveled to Hartford in a chartered bus. Delegates to the afternoon meeting were Chief Harry Schaefer, Bob Schmidt, "Mike" Gnacinski and Marvin Schaefer.

At the business meeting matters concerning the welfare of the association were discussed by chiefs and delegates. The evening program opened with a patriotic song, followed by a family style dinner. Covers were laid for 400 persons.

The toastmaster was John Feutz, Slinger, association president. The Hon. Edward J. Gehl, justice of the Wisconsin supreme court, who was scheduled to be the main speaker of the evening, was unable to reach Hartford because of road and weather conditions. J. Mohr of the Milwaukee fire department training school, was introduced as a speaker and talked on "Arson Fires."

Before closing the meeting, Art Rahn, a humorist of ability, entertained with short stories and witticisms. He is a former president of the Wisconsin State Fire Chiefs association and a retired chief of the Two Rivers department.

LENTEN QUIET HOUR SERVICE AT PARISH

On Wednesday evening, Mar. 24, at 8:00 p. m., the Women's Guild of Peace E and R church will conduct Lenten services with a special program.

Mrs. J. Tessar, chairman, will be assisted by Mesdames O. E. Lay, M. W. Rosenheimer, Clyde Smith, C. Kluever, H. Sauder and J. Schwind.

Mrs. R. Kroneke will render a solo and the choir will assist in the service. Mrs. Henry Rosenheimer will preside at the organ. Rev. F. Rodenbeck will deliver the sermon and all are welcomed to attend these Lenten services.

BIRTHS

KRUEGER—A son to Mr. and Mrs. Robert Krueger, R. 1, Kewaskum, Sunday, March 14.

MEYER—A son to Mr. and Mrs. John Meyer, Campbellsport, Monday, March 15.

SCHMIDT—A son to Mr. and Mrs. Theodore E. Schmidt, town of Wayne, Sunday, March 14.

WEILAND—A daughter to Mr. and Mrs. Leander Weiland, St. Kilian, Sunday, March 14, at St. Agnes hospital, Fond du Lac.

BILGO—A daughter to Mr. and Mrs. Roger Bilgo, Milwaukee, Tuesday, Mar. 9. The Bilgos have three sons.

ELDON RAMTHUNS MOVE

Mr. and Mrs. Eldon C. Ramthun have moved from the upper apartment of the Mary Remmel home on First st. to the upper apartment of the Arvin Merwin home on Clinton st. They moved there Saturday.

Kewaskum Rivers Team Winner of Tournament Championship at Port

Kewaskum's undefeated second half champions in the Land o' Rivers league continued their winning ways and gained new honors last week end by winning the Port Washington Gold Medal tournament championship. Kewaskum defeated St. Mary's of the Port city league, 65-52, in the finals of the tourney Sunday afternoon.

Thirteen teams were entered in the tournament and Kewaskum can feel very proud in being the best club in the meet. In its first game of the tourney Thursday night Kewaskum beat Bley's creations of Port, 55-42. They then advanced to the semi-finals Friday night and set down Horicon, also of the Rivers circuit, 55-52, in a close one. This victory put them in the championship finals and they won handily.

The tourney opened last Tuesday night when Belgium beat Howards Grove, Horicon tipped the Ben Franklins of Port, and Bley's of Port downed Grafton. Wednesday Elkhart Lake bested Cedarburg, St. Mary's of Port won over Belgium and Horicon took Saukville. In the first game Thursday Kewaskum defeated Bley's, Elkhart Lake eliminated Jets of Port, and St. Mary's defeated Ixonia. Friday Kewaskum beat Horicon and St. Mary's took Elkhart Lake. This put Kewaskum and St. Mary's in the finals Sunday and the locals came through. In the consolation finals Horicon trimmed Elkhart Lake.

In the opening contest against Bley's big Don Moisenheimer led the attack with 14 points although top honors for the night went to Bley's Becker with 17. Next in line the scoring was pretty evenly divided between George Hamman, Bobby Dreher, Lloyd Keller and Le Roy Keller. Kewaskum took a big 20-7 lead in the first quarter and stayed way ahead in copping the 55-42 win.

In the nip and tuck semi-finals Friday against Horicon Lorenson of the latter team was the big point maker with 16. Hamman and Lloyd Keller tied for best honors for the winners with 11 apiece. Meisy got 10 and L. Keller 9. Kewaskum trailed at the quarter, 19-16 but bounced back to tie it at halftime, 27-27. Horicon was ahead by a point, 44-43 at the third quarter's end but the locals outscored them in the final stanza to cop, 55-52.

In the championship finals towering Hamman set the pace with 17 points followed by Ken Pierce with 13 and L. Keller with 11. Center Galles was boss for St. Mary's of Port with 14. Amin in this tilt Kewaskum went well ahead in the first quarter, 21-9 and the game was never close. The halftime count was 38-15 and at the third quarter it stood at 50-26. The champions coasted in the final period to win 65-52. How St. Mary's reached the finals is hard to understand. They proved the easiest team in the meet for Kewaskum. Kewaskum's next action will be in the playoffs for the grand championship of the River's circuit. They will meet the winner of the Ixonia-Horicon first half playoff.

DARTBALL TOURNAMENT SUNDAY WON BY DUNDEE

Dundee won the annual Kettle Moraine Dartball league tournament at McLane gym in West Bend Sunday night by winning three games and losing one in the round robin series. Newburg, New Fane J and Kohlsville tied for second place with 3-2 while West Bend 1 was eliminated. In the playoff for second place Newburg took second, Kohlsville third and New Fane fourth. Kewaskum failed to place.

PARENTS INVITED TO 4-H MEET AT SCHNURR SCHOOL

Parents with children between the ages of 10 and 21 interested in a 4-H club are asked to attend a meeting at the Schnurr school on Tuesday evening, March 23, at 8:00 p. m. The Kewaskum Kiwanis club has arranged for Mr. Stodola, the county 4-H leader, to be there to discuss 4-H work.

NewsDites



ANCIENT EGYPTIAN
HORS-D'OEUVRES WERE ACTUALLY FLAT SPICED COOKIES, SERVED WITH JARS OF BEER OR WINE ON TRIPODS.



ROMANY GIPSY BOYS
AND GIRLS LEARN TO MAKE "HONEY COOKIES," SHORTENED WITH HEDGEHOG FAT WHICH KEEPS THEM FRESH ON THEIR LONG TREKS.



Copyright 1954, J. V. Clarke

Canso Causeway May Be Opened in 1954

The Canso Causeway, projected first land link between Cape Breton Island and the rest of Nova Scotia, may be ready for road and rail traffic next year. Hitherto all traffic has crossed the narrow Strait of Canso by ferry, reports the National Geographic Society. The first of these was established in 1883. But from January to April each year, boat schedules were sometimes interrupted by ice in the Strait.

Vacation Land
The ever-increasing importance of Cape Breton Island both as vacation land and seat of industry dictated construction of the \$22,800,000 causeway.

Highlands National Park, covering 390 square miles on the northern end of the Island, may receive as many as 35,000 visitors a year. Mines in the Sydney area, some of them extending four miles out under the Atlantic Ocean, annually produce 5,000,000 tons of coal. Part is used in huge nearby iron and steel mills.

As from the very beginning, fishing is a major Cape Breton industry. Fish may have attracted Norse sea rovers who knew about the island as early as the 10th century. Basque fishermen may have given it its name 100 years before Columbus discovered America. John Cabot claimed it in 1497 for England.

Of all the ports on the Atlantic seaboard, those of Cape Breton are nearest the shipping centers of Europe, Africa and South America. This, coupled with the Island's strategic position commanding the entrance to the St. Lawrence River, brought the French and British into prolonged battle for its possession.

Before the American Revolution erupted, England's American colonists helped her crush French power on Cape Breton. The final blow was the leveling of Fort Louisbourg, France's "impregnable" bastion.

Settlers Were Scots
After that, settlers poured in from the Highlands of Scotland. Their descendants still speak Gaelic and keep alive the tradition of the Highland Games. A few Islanders descend from the Acadians, whose expulsion from the Nova Scotian mainland in 1755 gave Henry Wadsworth Longfellow the theme for his poem "Evangeline."

Ancient Cape Breton has played its part in modern scientific discovery. At his Beinn Bhreagh estate near Baddeck on the salt lakes of Bras d'Or, Alexander Graham Bell, inventor of the telephone, experimented with airplanes, fast boats and agriculture.

The first successful Atlantic cable was landed at Cape North in 1867. The first airplane flight in the British Empire was made in 1909 over the Lakes by J. A. D. McCurdy, who had worked with Dr. Bell. In 1902, a radio station on Cape Breton Island received the first wireless message transmitted from Europe.

When sharpening an ax, keep it wet.—Sports Afield.

STRICTLY FRESH

ASTROLOGERS say the sun is gradually losing its energy. No wonder it's been so cold this winter.

With the coming of spring, many businessmen will be substituting the coffee break with the "tee" break.

A Harvard University professor recently said that present-day TV equipment can beam shows



to Mars or Venus. So why don't they?

This is rapidly becoming a woman's world, which no doubt explains the confused state it is in.

The Atomic Energy Commission recently reported that radioisotopes may someday be used to speed the aging of whisky. Isn't the whisky problem old enough already?



THOSE WERE THE DAYS



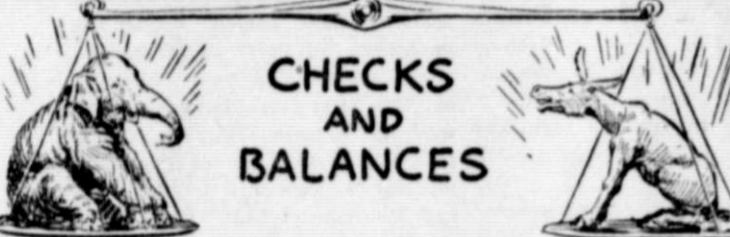
MARY WORTH'S FAMILY



KERRY DRAKE



OUR DEMOCRACY



ONE OF OUR TWO MAJOR POLITICAL PARTIES, THE REPUBLICAN, WAS BORN 100 YEARS AGO, MARCH 20, 1854, IN A LITTLE WHITE SCHOOLHOUSE THAT STILL STANDS IN RIPON, WISCONSIN.



CHECKS AND BALANCES IN OUR POLITICAL LIFE, AS WELL AS IN OUR GOVERNMENTAL ORGANIZATION, ARE PROVIDED BY THE TWO-PARTY SYSTEM. THROUGH THE REPUBLICAN AND DEMOCRATIC PARTIES, THE PEOPLE HAVE HAD AN OPPORTUNITY TO EXPRESS THEIR WILL, "FOR OR AGIN", IN THE GIVE-AND-TAKE THAT IS AN ESSENTIAL SAFEGUARD OF OUR DEMOCRACY.

Food Sense—Not Nonsense



'Doc,' It Looks As If You Hit Pay Dirt

Dental scientists may have struck pay dirt in their efforts to reduce dental decay. If so, the average American can hope to have his sweets, yet have fewer decayed, missing and filled teeth than at present.

To lessen the degree of decay, dental scientists have studied the use of "chemical barricades"—the newly talked of anti-enzymes. Anti-enzyme protection is based on the widely held theory that decay is caused by acids attacking the enamel of teeth; acids that are produced by the action of bacteria on foods containing high levels of sugar, foods that many people enjoy.

The little demons that cause the fermentation use enzymes as their tools to change sugar rapidly into enamel destroying acids. Those foods recognized as carbohydrate foods because they contain starch, such as enriched bread or cereals, have not been a dental threat. The enzymes break down these products so slowly that saliva can neutralize any acids formed in the process.

This theory is seen in action in countries such as Italy where 70 per cent of the calories are obtained from bread, spaghetti and macaroni. An Italian 60-year old person can be expected to have as good teeth as a 13-year old American child.

If any part of the cycle—from sugar to acid—can be interrupted, dental decay can be slowed to a walk. Research has turned to chemicals which may toss the proverbial monkey wrench into the mouth bacterial machine. These chemicals inactivate the enzymes which are necessary for acid production. From tests with thousands of subjects, two materials with tongue twisting names—sodium lauroyl sarcosinate and sodium dehydroacetate hold the most promise. Because these tongue twisters are absorbed by the film which covers the teeth their protection lasts for several hours.

It is hoped that evidence from clinical tests on tooth pastes containing the anti-enzymes will demonstrate that these "chemical barricades" are as effective in prevention of dental decay as the theory now indicates.

HAIR BREADTH HARRY



"Mister Fixum's Handy Hints"

BY ERNIE GARDNER



REPAIRING LEAKY CHIMNEYS

A leaky chimney can be a fire hazard during the heating season. It can also be the cause of a lot of damage to plaster and interior decorations during any season. It is a good idea to check up regularly whether or not you know you have a leak.

First, inspect the flashings. Paint them if necessary, and make sure that all joints are filled with roofing cement.

Check on loose brick and mortar joints. All crumbling mortar should be removed and replaced with new mortar. Loose brick should be reset.

Check joints between the chimney and flue lining. If there is a large crack, it should be refilled with cement mortar. Mix the mortar thin, and pour it into the crack.

It might be well to check at the flue opening to make sure the mortar is not running through. If it does run through, make the mortar a little thicker, and pour in only a small amount at a time. As a last resort, attach a rope to a burlap, and force this down into the flue to stop the leak. Then finish filling the crack. When the mortar has set, remove the burlap.

If the crack between the flue lining and the chimney cap is small, fill it with roofing cement. This is important, because a small leak at this point will become larger.

GET YOUR COPY NOW

A booklet, also called MISTER FIXUM'S HANDY HINTS is yours for 35c. Send to Ernie Gardner, 14189 Faust Ave., Detroit 23, Mich. There are three booklets. All three for \$1.00



CHILDREN LOVE IT
- and Velveeta is rich in milk's vital food values!

*High-quality protein, calcium, phosphorus, riboflavin, vitamin A

Cooks in just 7 minutes!

MACARONI AND CHEESE



Both in the one package
TENDER MACARONI AND KRAFT GRATED FOR FINE CHEESE FLAVOR

So Goes The Mind

By Orin R. Yost, M. D.
Medical Director, Edgewood Sanitarium

(Editor's Note: Dr. Yost is a graduate of the Medical College of Virginia at Richmond, studied psychiatry at St. Elizabeth's Hospital in Washington, D. C., taught psychiatry at Columbia University, New York, was division psychiatrist of the 79th division in World War II, and is presently Medical Director of Edgewood Sanitarium Foundation.)

(Author of: What You Should Know About Mental Illness.)

IMPROVING THE LOT OF THE AGING

Part I
How can you help the aging now to prepare for a greater happiness when they will have attained the age of 65?

Science has already brought problems to 13,000,000 Americans by lengthening their life expectancy. What does science have to offer toward solving the numerous problems of the aging or for enriching their lives?

It is true that marked progress has been made in recognizing and treating some of the ills peculiar to old age, though much further research is vitally necessary.

If the older's welfare is to be improved, it is necessary that people be brought into a fuller understanding of his physical, his emotional, his intellectual and his spiritual capacities and needs.

Generally speaking, when the individual passes his fortieth year, body processes and mental processes begin gradually to experience changes. As the years continue to exact their toll, the aging person is called upon to make many adjustments as his children leave the home, contacts with friends and acquaintances grow fewer, anxiety and feelings of insecurity develop, and introspective worries and fears, as well as frustrations, increase.

The older finds, too, that his interest in new things begins to wane. He probably can boast of no bank account. Two-thirds of the Americans who have reached sixty-five years have no money. Physical disabilities appear to be on the increase and psychic disturbances often affect his digestion and nutrition adversely. He may either become so much disturbed as to do without food or he may submerge his anxieties through a full stomach and by habitual overeating experience the additional danger of obesity with its attendant ills.

Perhaps at the age of sixty-five the older is forced to retire from work. In some instances such a step proves advantageous, whereas, on the other hand, if the older has a capacity for many additional years of future service and is forced into retirement for which he is not prepared, such a step is often fraught with grave dangers and much unhappiness. At this period in particular, the aging person, who experiences an overwhelming feeling of helplessness and dependence, finds in religion a very great solace.

(To be continued)

SI, SI



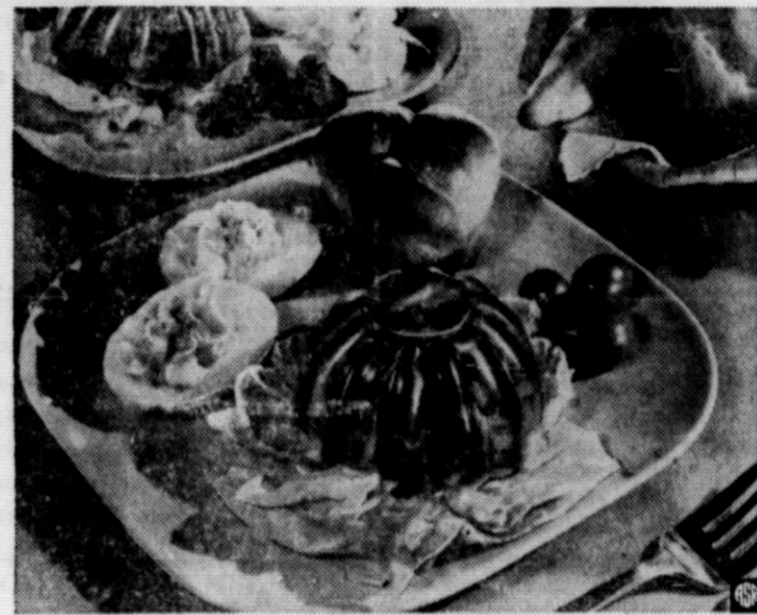
If you're ready for a vacation where you can relax and rest—then settle back in your chair, take needle and floss in hand and away we go. You'll be amazed at the pleasure you will get from this land of romance and glamour via the lovely kitchen tea towel. Your ticket to a land of enchantment is pattern C3314, 20c. This "ticket" is useable several times. Take the whole family along with no increase in fare.

Send orders to Handcraft Service (The Colonial Company), Journal Publishing Co., Inc., 1243 Swift, Kansas City 16, Mo.

QUICK!
rub on
MUSTEROLE
to speedily relieve muscular
ACHES, PAINS
STIFFNESS

Sarah Anne's COOKING CLASS

Light Lunch For Lithe Ladies



A feast for the eyes is this light, well-balanced luncheon plate, good to eat and easy on the figure. What nicer meal to precede a feminine afternoon of canasta or bridge—or an intimate luncheon with a dear friend. The asparagus salad, molded in lemon-flavored gelatin, can be prepared the night before. Pop the eggs in with the breakfast eggs and let them cook to the hard-cooked stage, then devils them after husband and children have gone their several ways. There'll still be two or three hours to put the house—and yourself—in order. At the last minute there is only the table to set, the rolls to heat, the charmingly simple luncheon plate to arrange. You are fresh, unruined and free to give all your attention to guests and game. Here's how the fruit-flavored gelatin salad is made:

Asparagus Salad
1 package lemon-flavored gelatin
1 cup hot water
1/2 cup asparagus liquid and water
3 tablespoons vinegar
3/4 teaspoon salt
Dissolve gelatin in hot water. Add asparagus liquid and water, vinegar, and seasonings. Chill until slightly thickened. Fold in asparagus and pimento. Turn into individual molds. Chill until firm. Unmold on crisp lettuce. Garnish with mayonnaise. Makes 6 servings.

Informality seems to be one of the greatest charms of Sunday night suppers. The hostess relaxes and every one feels at home. Decide on things that can be prepared ahead of time and have plenty of it.

Asparagus on Toasted Buns
1 package frozen asparagus
Toasted buns
Cheese sauce
Cook asparagus according to package directions. Meanwhile, make cheese sauce.

Cheese Sauce
1/3 to a cup milk
1/2 lb. American cheddar cheese
Place milk in double boiler. Slice cheese into it. Heat, stirring occasionally, until well blended.

Arrange toasted buns, cover with cooked, drained, asparagus. Top with cheese sauce. Serve hot.

Tongue Casserole
2 cups diced cooked tongue
5 to 6 slices cooked tongue, cut about 1/4 inch thick.
4 cups cooked spaghetti
2 cups condensed cream of mushroom soup
1/2 cup shredded cheese
Place about 3 cups of spaghetti into a greased 2 quart casserole. Cover with diced tongue, then the remaining spaghetti. Pour mushroom soup over it. Bake in an oven 350 degrees about 30 minutes. Remove from oven.
Arrange slices of tongue on top and sprinkle with cheese. Return to oven for 5 minutes or until tongue slices are slightly browned and cheese is melted.

Ragout of Chicken
2 tablespoons fat or oil
1 1/2 to 2 lb. chicken cut up
1 teaspoon salt
1/8 teaspoon pepper
1/2 cup water
2 1/2 inch slices salt pork diced
2 tablespoons flour
1 egg yolk beaten
1 cup milk
2 tablespoons minced parsley
Heat fat in pressure cooker. Brown chicken on all sides in it. Sprinkle with salt and pepper; add water and salt pork. Cover. Cook at 15 lbs. pressure 15 minutes. Reduce pressure slowly, as the manufacturer directs. Blend flour with beaten egg yolk, add milk, making a smooth paste. Pour over chicken in saucepan. Heat, stirring constantly until sauce is slightly thickened. Serve with hot fluffy rice. Garnish with parsley.

Ham Mousse
1 tablespoon plain gelatin
1/4 cup cold water
1/2 cup boiling water
2 cups chopped cold boiled ham well seasoned
1 teaspoon prepared mustard
1/2 teaspoon paprika
1/2 teaspoon salt
1 tablespoon catsup
1 dozen ripe olives chopped
1/2 cup cream, whipped or evaporated milk, whipped
Soak gelatin in water about 5 minutes and dissolve in boiling water. Cook and add to ham. Add

mustard, paprika, salt, catsup, olives and whipped cream. When firm, unmold on lettuce. Garnish with slices of tomatoes, and deviled egg halves.

Frozen Fruit Salad
1/2 lb. pitted, peeled, quartered Malaga grapes
Pulp from 3 oranges
1 small can shredded pineapple
1 bottle marachino cherries cut in pieces
1 package cream cheese
1/2 pint cream whipped
Mix grapes, orange pulp, pineapple and cherries. Drain overnight. The next day mash cream cheese to a paste. Gradually blend in the mayonnaise and whipped cream. Turn into freezing tray and freeze. Serve on lettuce with a tiny bit of dressing.

Peppermint Parfait
1/3 cup sugar
1/4 cup water
1 cup cream or evaporated milk
2 egg whites
2 drops oil of peppermint
Stir sugar and water until sugar is melted, then boil without stirring until syrup spins a thread when dropped from spoon. Add slowly to well beaten egg whites. Beat until cool. Chill. Add cream whipped and flavoring. Color a delicate green. Fill small paper parfait cups with this mixture. Into the center of each put a soft cream mint wafer—plain or chocolate covered. Sprinkle top with grated unsweetened chocolate. Place cups in freezing tray and freeze almost 3 hours. Serve in the cups.



BUCKETS GAL-ORE—Hitting the hoops for a six-game average of 41.3 points, 16-year-old Velma Laming is the pride of the girls at Easton, Kan., High School. Velma is the high-scoring forward on the school's feminine quintet.

"Splash Area" Gets Cabinet Treatment



This homemaker has brought color contrast and convenience into her kitchen by adapting the material on her cabinets to the "splash area" between the sink and windows.

Her cabinets are gleaming white and the black and white squares between the top and bottom cabinets bring out their beauty. The cabinets and "splash area" are covered with prefinished wall-paneling, an extremely smooth material made of tempered hardboard with a factory finished baked enamel surface, whose resistance to dirt is praised in homes throughout the land.

The material which comes in sizes from four by four to four by twelve and can be readily cut to any size and applied to almost any surface is also used on the ceiling of this kitchen.



YOU CAN BET YOUR LIFE—SAFETY PAYS!

Traffic accidents kill more children than any disease. That's why school signs are put up. Every time you disobey one, you're gambling more than you can pay—if you happen to lose!

BE CAREFUL—the life you save may be your own!



BLIND WRESTLER—Guided by a belt attached to his "seeing-eye," Michigan State College's Ted Lennox works out in the school's gym. Despite the fact that he is blind, the 20-year-old psychology student has scored well in collegiate wrestling bouts, tipping the scales at 187 pounds. Lennox's "seeing-eye" is Dan Greniewicki, also a Michigan State student.



DO-IT-YOURSELF STYLE—Cold water poured over a bucketful of red-hot stones provides this Frenchman with a homemade steam bath—Finnish style. The one pictured above was built in the heart of Paris by an enthusiastic cameraman after he saw such baths while covering the 1952 Olympic Games in Finland.

Miller's

say

There's a new easy way
To choose your new carpet
So hurry to Miller's

Want Ads

Can be seen by appointment only. Call H. Maaske 24W. 3-5-17

WANTED—FEEDER PIG, 30 lbs. and up for Wisconsin, Ill. and Iowa buyers. Highest prices paid. Call collect or write Clarence Acker, Middleton, Wis. Phone 2569-6 1-29-17

WANTED—Need large and small farms, with or without personal. Other real estate also wanted. Have cash buyers now. Call Harry Maaske, Kewaskum 24W. Office open all day and Tuesday and Friday evenings. 2-26-17

PAINTING—Interior and exterior painting, spray or brush. Bug cleaning, Leonard Mindt, call 28, Kewaskum. 5-22-17

Politeness is like a parachute—there's nothing in it, but it eases the jolt.—Ripon Weekly Press.

Send them the Statesman.

FOR SALE—Good, genuine Ford tractor. Inquire Lee Honeck Farm Supply, Kewaskum. 3-19-17

FOR RENT—Three rooms with running water. Inquire Claver Simon, First St., Kewaskum 3-19-21p

FOR SALE—Electric sewing machine, \$30. Phone Kewaskum 97M 17

FOR SALE—Certified Honda and Sheiba seed oats; also non-certified. Recleaned. Good germination. Guaranteed. Wm. Illian, Adell, Wis. 3-19-17

FOR SALE—Grain and pea drills; spring tooth and furnace. Baker Canning Company, Theresa, Wis. 3-19-21

HELP WANTED, FEMALE—**MAKE MONEY** at home addressing envelopes for advertisers. Use typewriter or long-hand. Good full, sparetime earnings. Satisfaction guaranteed. Mail \$1 for instruction manual. Trnassio, P. O. Box 1613, Wichita, Kansas. 17p

BUSINESS OPPORTUNITY—RELIABLE PARTY—Man or woman to service new automatic vending machines. No selling. Car, references, \$600.00 working capital necessary to qualify. Nets to \$100.00 monthly immediate income part-time. Increases when full-time. Include phone and address for local interview. Write Box 2617, Highland Station, Minneapolis, Minn. 17p

USED FARM MACHINERY
McDEERL MODEL "B" TRACTOR
ALLIS-CHALMERS MODEL "W" TRACTOR
ALLIS-CHALMERS MODEL "C" TRACTOR
McDEERL MODEL "H" TRACTOR
USED CORN CULTIVATORS FOR MOST TRACTORS
USED TRACTOR MOWERS
USED MANURE SPREADERS
"SEE US FOR THE BEST IN FARM MACHINERY"
"GOOD MACHINERY PRICED TO SELL."
MYRON PERSCHBACHER
PHONE 20W KEWASKUM
Allis-Chalmers Sales-Service

WANTED—Practical nurse several hours daily to help care for invalid woman. Call mornings, Kewaskum 91R. 3-12-21p

FOR SALE—1950 25 ft. Stream-lite trailer house, with water heater and shower, with water entrance way. Good condition. Priced to sell. Phone Kewaskum 61P. 3-12-21p

PAINTING—Exterior and interior painting and papering. S. Keller, Kewaskum. Phone 56-W. 3-5-17

\$10,600 \$10,600 \$10,600
Modern 3 bedroom home on east side of Kewaskum; automatic oil heat, oil tank in basement; hot water heater; 1 bedroom down, 2 bedrooms and bath up; 1 car garage; 69x120 foot lot.

NOTICE TO CAR DEALERS
Sealed bids will be received at the office of the County Clerk at the Court House at West Bend, Wisconsin not later than 2:00 P. M. March 25, 1954 on the furnishing and delivery by April 25, 1954 on the following:
1. Five new five-passenger two door automobiles, standard shift, black color with the following installed. Air-conditioning, heater, and defroster, directional lights, spot light, back-up lights, undercoating, police speedometer, spare tire and blow-out proof tubes in all tires.
2. All bids on cars to show actual delivery weight of car and horsepower rating.
3. Washington County will furnish tax exemption certificates.
4. The right to reject or accept any or all bids is reserved by the Public Property Committee and the Sheriffs Committee of the Washington County Board of Supervisors.
Dated at West Bend, this 2nd day of March, 1954.
Signed,
Anton P. Staral,
Clerk of Washington County 3-12-21

Seed Tested and Tagged is Best Crop Insurance

The value and quality of a crop depend on the kind and quality of seed planted. True, good seed without adequate fertilization and proper cultural practices may not produce maximum crops. The greatest economy results from the right combination of which good seed is most important.
Buying uncleaned or superficially cleaned and untested untagged seed from a neighboring farmer without accurate knowledge of purity or germination, or at most only verbal assurances instead of documented tests, or cheap seed from an unknown truck peddler, are poor policies. Buyers are coming to realize that such "cheap seed" is not cheap in the long run but is really the most costly.
Much of the seed grain used for sowing is grown on the farm where sown and farm cleaned. Where the farmer's fields have been kept relatively free from weeds by good farm practices and he maintains a seed increase plot for each variety grown, this practice is not to be discouraged. But this advice does not apply to small-seeded legumes and grass seeds.
The farmer who wishes to sow alfalfa, red clover, Ladino clover, hairy vetch, bromegrass, orchardgrass or any one of many other legumes and grasses, does not ordinarily produce the seed he sows. He recognizes the necessity of looking to the field seedsmen to obtain the high-quality, disease-free and weed-free seed he desires for sowing.
Considered on price alone, the difference between high-quality recleaned seed and farm-cleaned seed is very little. The seed cost,

You Get Most for Your Seed Dollar by Buying

- (1) Recleaned and tested seed from a reliable source.
- (2) Seed tagged in accordance with State and Federal seed laws.
- (3) Seeds of good germination and purity and free from primary noxious weed seeds.
- (4) Certified seed of improved varieties of grasses and legumes.

even when the very best seed is used, is only a minor part of the seeding operation—small compared with the expense of preparing the land and doing the seeding. It is certainly folly to risk a poor stand or invite an infestation of weeds or disease when for so little more these unnecessary risks can be avoided.
A farmer can get the greatest protection against low-quality seed by buying seed only from a reliable source, tagged in accordance with State and Federal seed laws to show the high-quality seed he desires as to variety, purity, germination and freedom from weed seeds.
When he buys seed of an improved variety of grass or legume from his seed supplier, he asks for certified seed and sees that it bears the proper certified tag which identifies such seed with the pedigree of that variety. He finds that recleaned tested and tagged seed is the most economical seed to use. It gives him the kind of crop insurance he wants at low cost.

HOUSEHOLD GOODS PUBLIC AUCTION

Sunday, March 21, COMMENCING AT 12:30 P. M. KEWASKUM OPERA HOUSE, KEWASKUM, WIS. SALE INDOORS—RAIN OR SHINE in good condition.
ANTIQUE: Rope Beds, Antique Chimes, Spice Box, Coffee Grinder, Bracket Lamps, Dinner Bell, Lincoln Rocker, Captain Chairs, Fancy Plates, Cut Glass, Hanging Lamp, Globe Lamp, Antique Doll.
TERMS: CASH
J. M. ENOS, Owner
R. B. Casper, Administrator
ART QUADE, Auctioneer

ENGAGEMENT TOLD
Mr. and Mrs. Walter Sprafan, Campbellsport, R. 3, announce the engagement of their daughter, Mae, to Robert Oeming, son of Mr. and Mrs. Otto Oeming, Campbellsport, R. 3, formerly of Kewaskum.

Auction Auction Auction SUNDAY, MARCH 28, 2 P. M. at Kewaskum, Wisconsin

3 BEDROOM HOME WITH BATH, ELECTRIC HOT WATER HEATER, NOW VACANT. BIG SIXTYFOOT LOT, LOCATED ON NORTH SIDE OF KEWASKUM, ON HIGHWAYS 45 & 55. OWNER BOUGHT FARM, WILL SELL FOR LESS THAN COST. POSSESSION WITHIN 10 DAYS. THIS IS A REAL BARGAIN FOR SOME ONE WHO WANTS A LOW COST HOME. FOR INSPECTION SEE

THIS BEFORE AUCTION STARTS OPEN FROM 12 NOON TO 2 P. M. ON DATE OF AUCTION.
FRED BOWE, OWNER
COL. LESTER DREHER, AUCTIONEER
HARRY H. MAASKE, REAL ESTATE BROKER
FINANCING CAN BE TAKEN CARE OF ON DATE OF SALE. 3-12-21

Auction Auction Auction SUNDAY, APRIL 4, 1954, 1 P. M. EMIL SIEGEL PROPERTY

1 MILE NORTH OF KEWASKUM LOOK FOR SIGNS.
House, big barn and about 2 acres of land. Will be auctioned off at 2:30 p. m. House has 2 bedrooms up, 1 bedroom down, living room, kitchen and 2 other rooms, part basement. Barn 89x22 feet, basement under barn. A dug well. About 200 feet frontage, about 170 feet deep. Electric lights.
HOUSEHOLD
2 cook stoves, circular wood and coal stove, davenport and 2 chairs, bed davenport, player piano, 4 dining room chairs, 4 kitchen chairs and table, 2 beds with springs, 1 sewing machine, 1 kitchen cabinet, 3 dressers, 1 antique cabinet, hand made antique china ware and dishes, pots and pans, fruit jars, some pictures, some tools and other articles too numerous to mention.
Paul Landmann, Bank of Kewaskum, Cashier
Col. Lester Dreher, Auctioneer
Harry H. Maaske, Real Estate Broker 3-12-21

AUCTION Saturday, March 20

COMMENCING AT 12 NOON AL KREWALD ON HWY. D, 1 MILE NORTH OF SILVER CREEK

Having sold my farm I will sell my entire personal property to the highest bidder, to-wit:
LIVESTOCK
30 HIGH GRADE HOLSTEIN DAIRY CATTLE. All T. B. and Bang's tested. 15 milk cows, nearly all fresh with calf by side; 4 yearling heifers; 1 yearling bull; 10 calves. 100 Hybrid Leghorn hens. All hay, oats and silage on farm.
MACHINERY
1947 Dodge truck, Model A Mc-D tractor on rubber, cultivator, plow and chains for above tractor; Model A R. John Deer tractor on rubber, new Case side delivery, 2 bottom Oliver tractor plow, rubber tired wagon and rack, new Fox silo filler, 16 bar John Deere grain drill, fanning mill, Mc-D. grain binder, New Idea manure spreader on rubber, 12 bar seeder with seeder attachment, 3 sec. wooden drag, oils and drums, grease, etc., log chains, corn binder, fencing tools, J. D. quack digger, mower, loader, 3 sec. spring-tooth, stone boat, hay rake, wagon and rack, platform scale, pumpjack and motor, sprayer, fence posts, ladder, grindstone, emory stand, pile lumber, DeLaval 2 single unit milking machine with large pump, 16 milk cans, poultry equipment, etc., ropes, belts, forks, shovels, all barn tools and other tools on this farm, too numerous to mention.
TERMS: 1/3 down, bal. 1 to 6 months. Feed cash.
AL KREWALD, Owner
Al Krier, Auctioneer
A. J. Mueller, Cashier

The most popular labor-saving device for women is still a husband with money.—Sparks.

NASAL CONGESTION ASSOCIATED WITH HEAD COLDS MAY CAUSE SYMPTOMS OF

SINUS

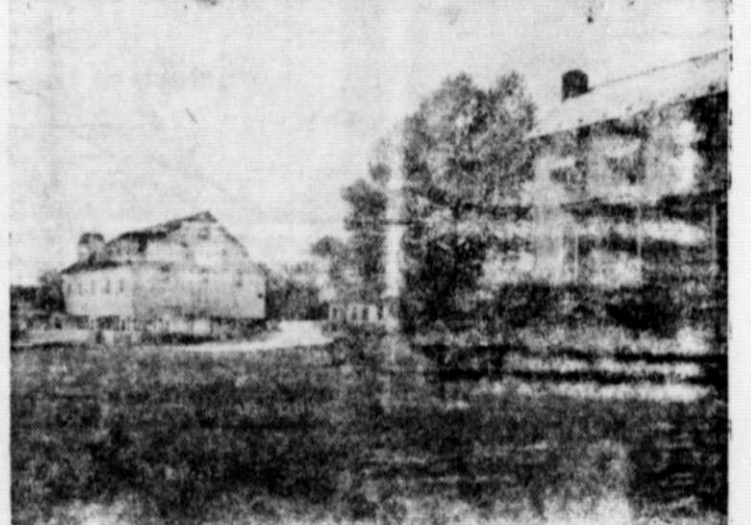
ASTHMA, HAY FEVER.

Amazing New Treatment—FREE TRIAL
Thousands have received amazing, fast relief with this sensational, new treatment, from symptoms of hay fever, asthma, sinus headaches, pressure in forehead, soreness in eyes, chest, bones, top of head, back of head and down neck, when caused by nasal congestion. Write for 7 DAY FREE TRIAL. POSTPAID, no cost or obligation to try it except, if it is agreed, you will mail it back, postpaid at end of trial period if not amazed with results. American Laboratories, Lodi, California.



LEES CARPET SELECTOR
PUTS A WORLD OF COLOR AT YOUR FINGERTIPS
Here's the exciting new way to choose your carpet. Quick as a wink you'll see the color you've been hunting for, find all the patterns and textures in your favorite shade grouped together. It's easy to compare styles, work out your own decorating scheme around your carpet choice right in the store! Come in today and select your heavenly Lees carpet this modern, time-saving way.

Improved Lawn Grasses Available or in Prospect



Improved lawn grasses, with greater resistance to disease and wear will increase attractive farm and home lawns, like this one.
It will be some time before new and improved strains of lawn grass will to any extent replace high quality commercial seed of such well-known grasses as Kentucky bluegrass, creeping red and Chewings fescue and the bentgrasses.
H. B. Musser, Pennsylvania turf specialist, gives us a picture in the Seed World of the progress made in improving lawn grasses. He says we should know first what qualities a grass should have to make a good turf.
It must be persistent in its environment and have a reasonable tolerance to the diseases which cause many turf failures.
It must be a good seed producer and capable of reproducing itself through successive generations without loss of its desirable qualities.
And, it must produce a good quality turf for the purpose for which it is to be used. Leaf density, good color, desirable texture, and resistance to wear are all important.
Merion bluegrass will grow well throughout the entire area of Kentucky bluegrass adaptation, especially in the more southern sections of the region where there is most trouble in maintaining satisfactory bluegrass turf. It is more tolerant to the leafspot diseases which are responsible for most of the poor quality of common bluegrass turf. The density, texture and general quality of Merion turf are consistently as good or better than common.
Delta bluegrass is a vigorous strain best adapted to the cooler sections of the Kentucky bluegrass-growing region. When healthy it produces a dense turf of better quality than common.
Illhebe and Trinity fescues are much alike in appearance, productivity and quality of turf which is appreciably better than common Chewings and creeping red under cool growing conditions.
Alta and Kentucky 31 fescues are coarse in leaf texture and only moderately disease-tolerant. Their virtue is in their toughness and resistance to wear which makes them desirable for athletic fields and similar areas.
Several new strains of Bermudagrass which are definite improvements over the common are coming into use in their region of adaptation, U-3, Gene Tift, Tif-tine and Tiftawn show promise.
Meyer Zoysia, a finer textured, wear-resistant selection from Japanese lawngrass, has an excellent record in reducing crabgrass infestations in adapted areas.
Whether a particular grass should be used in a mixture depends mainly upon its basic characteristics and its ability to compete successfully with the other grasses. For example, common Kentucky bluegrass and common red fescue normally get along well together.

READY FOR YOUR ENJOYMENT

Lithia BEER

BOCK BEER

THE TASTE TREAT OF THE SEASON

Ask for it at
Your Favorite Tavern
or Beer Depot

Product of WEST BEND LITHIA CO., West Bend, Wisconsin

Enjoy and Serve It
In Your Home

KEWASKUM STATESMAN
PUBLISHED WEEKLY

D. J. HARBECK, Publisher
W. J. HARBECK, Ed.-Business Mgr
Entered as second class matter Oct. 17, 1895, at the Post Office at Kewaskum, Wis., under the Act of Congress on March 3, 1879.

SUBSCRIPTION RATES:
One Year \$2.50
Six Months \$1.25
Single Copy .05

Around The Town

—Mr. and Mrs. Leonard Rindt and sons spent the week end with relatives at Clintonville.

—Jim Ryan returned home after spending a six weeks' vacation in Florida.

—MODERN PAINLESS CHIRO-
PRACTIC. ROBERT G. ROBERTS,
D. C., 702 ELM ST., WEST BEND,
WIS.

—Mr. and Mrs. John H. Martin and Miss Betty Koerble visited Mr. and Mrs. William Martin at Campbellsport Wednesday.

—Mr. and Mrs. K. A. Honeck, Sr. have returned home from a winter vacation in Florida.

—YES, it's Miller's at Kewaskum for quality home furnishings at most reasonable prices. Open daily until 6, Fridays until 9 p. m. Free deliveries.

—Dr. and Mrs. F. E. Nolting and daughters returned home last week from a vacation through the south.

—Jim Andrae has returned home after spending the winter months in Florida.

—Need large and small farms, with or without personal. Other real estate also wanted. Have cash buyers now. Call Harry Maaske, Kewaskum 21W. Office open all day and Tuesday and Friday evenings.

—Mr. and Mrs. Louis J. Heisler and Mr. and Mrs. William Martin were among the thousands who attended the first evening mass celebrated by Archbishop Albert G. Meyer in the Milwaukee arena Thursday evening. Father La Buwi of Kewaskum served as deacon.

—Barbara Schneider, daughter of Mr. and Mrs. Walter Schneider, Kewaskum, who has been attending St. Arnes convent, Fond du Lac, for the past two and one-half years, has transferred to St. Mary's Catholic High school in Menasha.

—SEE FIELD'S FURNITURE MART AT WEST BEND BEFORE YOU BUY YOUR FURNITURE, RUGS AND HOUSEHOLD APPLIANCES. YOU CAN BUY FOR LESS AT FIELD'S. WHY PAY MORE? FIELD'S FURNITURE MART, WEST BEND, WIS., TELEPHONE 988. OPEN FRIDAY EVENINGS, OTHER EVENINGS BY APPOINTMENT. FREE DELIVERY.—adv.

STATE OF WISCONSIN,
COUNTY COURT,
WASHINGTON COUNTY

—NOTICE—
HEARING APPLICATION FOR
ADMINISTRATION—TAKING
PROOFS OF HEIRSHIP—AND
TO CREDITORS.

IN THE MATTER OF THE
ESTATE OF ELEANOR E. KETTER,
Deceased.

Notice is hereby given that at a term of said Court to be held on Tuesday, the 6th day of April, 1954, at 10 o'clock in the forenoon of

said day, at the Court House in the City of West Bend, in said County, there will be heard and considered: The application of Marie Ketter Gloede for the appointment of an administratrix of the estate of Eleanor E. Ketter, deceased, late of the Village of Kewaskum, in said County, and for taking proofs of who are the heirs of said decedent; Notice is further given that all claims against the said Eleanor E. Ketter, deceased, late of the Village of Kewaskum, in Washington County,

Wisconsin, must be presented to said County Court at West Bend, in said County, on or before the 5th day of June, 1954, or be barred; and that all such claims and demands will be examined and adjusted at a term of said Court to be held at the Court House in the City of West Bend, in said County, on Tuesday, the 15th day of June, 1954, at 10 o'clock in the forenoon of said day.
Dated March 10th, 1954.
By Order of the Court,

Milton L. Meister, Judge.
Bartelt & Bartelt, Attorneys.
Theatre Building
Kewaskum, Wisconsin

3-12-54

Trouble with girls who look like a million is that they are usually looking for it too.—The Ettrick Advance.

"We buy, sell, list and auction lake properties, farms, and small businesses. For quick cash for your property, contact the

Factory Outlet Store

"We Buy the Best to Sell for Less"

Free **One Week** Free

A PAIR OF FIRST GRADE NYLONS, WITH EACH LADIES' DRESS PURCHASED.

MEN'S REVERSIBLE SPRING DRESS JACKETS, FANCY DASH ON ONE SIDE, PLAIN ON THE OTHER.

only 11.25

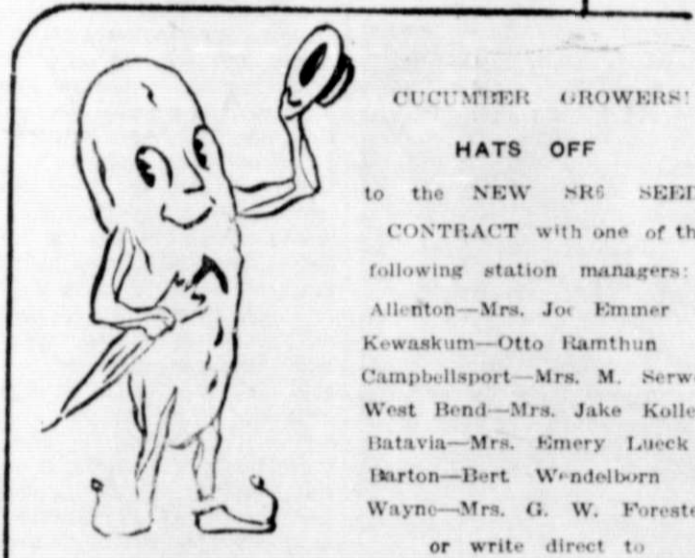
Special 1.00

CHILDREN'S BOXERS, JEANS AND CRAWLERS. CHECKS, DENIM AND PLAIN COLORS.

Special 2.49

CHILDREN'S BROWN LEATHER OXFORDS. LONG WEARING COMPOSITION SOLES. SIZES 8½ TO 3

Howdy Mr. Farmer:
I'm Back to Make You Money!



CUCUMBER GROWERS!

HATS OFF

to the NEW NRS SEED.

CONTRACT with one of the following station managers:

Allenton—Mrs. Joe Emmer

Kewaskum—Otto Ramthun

Campbellsport—Mrs. M. Serwe

West Bend—Mrs. Jake Koller

Batavia—Mrs. Emery Lueck

Barton—Bert Wendelborn

Wayne—Mrs. G. W. Forester

or write direct to

Green Bay Food Co.
TELEPHONE HE 7-4387



GUARANTEED FOR 5 FULL YEARS
The Specially New VARCON
F60 HURRICANE BATTERY
• Silver Treated
• Has Extra Plates
19.95 Exch.
63 plates in Group 21—57 plates in Group 1
give you 25% more power. Fill 3 times a year!

Gamble Authorized Dealer
Frank Felix Kewaskum

Bartelt Real Estate Agency
KEWASKUM
Phone 342

Endlich's is It's a Fact!

A LION'S SHARE IS NOT THE GREATER PORTION!



And We Can Prove It

A LION'S SHARE IS NOT THE GREATER PORTION

According to Aesop's Fables the Lion's share is all. A Lion's share now means the unfair appropriation by one person of something in which all have an equal right or interest.—Uncommon Knowledge, George W. Stimpson

You make no mistake when you patronize ENDLICH'S, for here your business is always welcome.

EYES TESTED

GLASSES FIT



For a Fine Assortment

of Wines, Liquors

Beer and Cigars

Stop at HEISLER'S

Bar and Liquor Store

KEWASKUM
Phone 89

THOENNES MFG. CO.

Manufacturers of

CHOPPER BOXES

ALSO

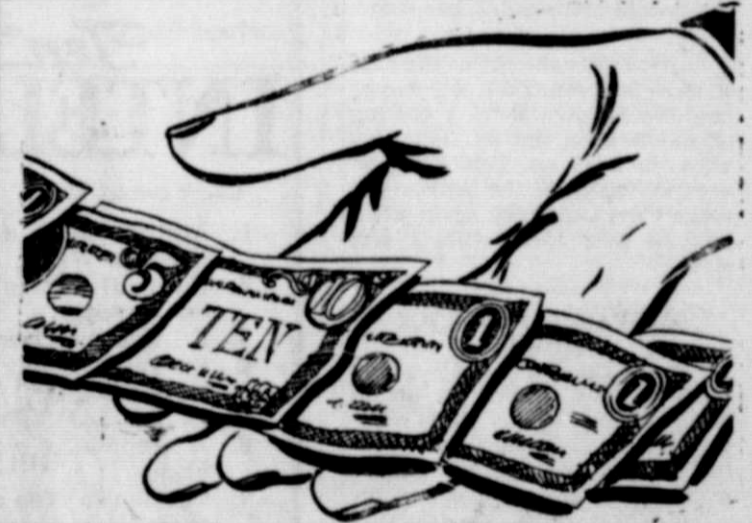
GENERAL BLACKSMITHING

AND REPAIRING

We Specialize in Plow Points

Located at Intersection of Hwy.

28 and 55 6-13



Hello and Goodbye

Surely, money that you've worked so hard to earn deserves a better fate . . . Why not make certain that some of it stays with the one person who deserves it the most . . . you!

SAVE with OUR help!

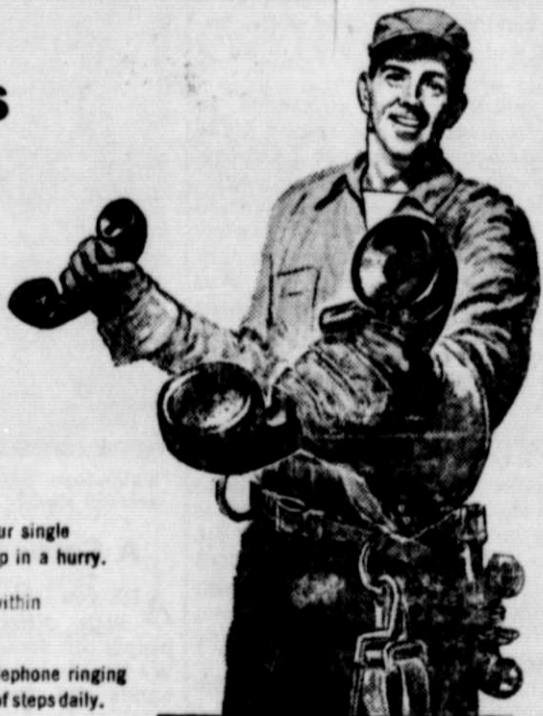
Bank of Kewaskum

Kewaskum, Wisconsin

Member Federal Deposit Insurance Corporation

Check the reasons YOU need an EXTENSION TELEPHONE

- PROTECTION . . . Burglar downstairs . . . so is your single telephone. An Extension Telephone upstairs brings help in a hurry.
- PRIVACY . . . Confidential call—family or friends within earshot. An Extension Telephone gives you privacy.
- CONVENIENCE . . . Housecleaning upstairs . . . telephone ringing downstairs. An Extension Telephone saves you hundreds of steps daily, and if you're in business
- BETTER SERVICE for your customers. An Extension Telephone in your store or shop saves their time and yours.



Your second telephone costs so little—only about a postage stamp a day! Call our Business Office NOW!

General Telephone Company of Wisconsin



A Member of One of the Great Telephone Systems Serving America.

Your Telephone is your biggest household value

GROCERY SPECIALS

- Reynolds Wrap 27c
25 FOOT ROLL
- IGA Light Meat Tuna 39c
7 OUNCE CAN
- IGA Peanut Butter 29c
11 OUNCE GLASS
- IGA Tomato Juice 49c
46 OUNCE CAN 2 FOR
- IGA Prepared Spagetti 23c
16 OUNCE CAN 2 FOR
- IGA Fruit Cocktail 39c
29 OUNCE CAN
- Oil Sardines 19c
4 OUNCE CAN 2 FOR
- Powdered Sugar 25c
1 POUND BOX 2 FOR
- IGA Applesauce 41c
15 OUNCE CAN 2 FOR
- IGA Sugar Peas 18c
16 OUNCE CAN
- Sno Kream Shortening 79c
3 POUND CAN
- Jelit Desert Powder 20c
3 BOXES FOR

Marx I.G.A. Store

Kewaskum, Wis.

The First Crocus

tells a tale of departing winter. Be sure to protect your woollens against moths. Bring them in to us for dry cleaning that is thorough and efficient.



OURS
24.125 F 2 KEWASKUM
CLEANERS
"MARTINIZING"
IS MORE THAN DRY CLEANING!

Teacup Topics

By Betty Ann

EDITOR
THE MILWAUKEE JOURNAL
WOMAN'S PAGES

The average housewife takes 20,000 steps a day, all the more reason for pampering her feet. When tubbing or showering, take special pains with your feet, keeping a lookout for rashes, blisters and callouses. Consult your podiatrist at the first signs of disease, says Betty Ann.

The only way to keep hair healthy and shining is to keep it clean. A thorough shampoo means at least two rinsings and two or three rinsings.

And it means a soft brush worked along the hair line to scrub away any cosmetics that may have accumulated.

With the new home drying gadgets on the market, it isn't necessary to set aside a special day for shampooing. What counts is a regular, at least once a week shampoo and conscientious brushing. Then you'll see light spring to life in your hair.

A mother-to-be is usually so busy thinking about diet, check-ups and knitting, that she doesn't have to much time to devote to a complicated beauty routine. Yet with regular, simple skin care her months of waiting will be much more comfortable.

One cosmetic house has compounded a skin lubricating cream for the particular problems of expectant mothers. The emollient was formulated to keep skin soft, and supple during pregnancy, and to help regain natural loveliness after the baby arrives.

Starching a garment makes subsequent washings of the garment easy, since soil tends to lodge on the starch rather than on the fabric. It's a good idea to starch house dresses and aprons.

Gum can be removed easily from clothes by rubbing with an ice cube. The ice causes the gum to harden and shrink. It can then be lifted off the clothing easily.

Prevent the inside of your salt shaker's metal top from rusting by painting with nail polish. Open holes from inside out with darning needle after polish has dried.

If you're caught out in the rain or snow and your good calf pumps are soaked, give them a coating of saddle soap and let them dry with the soap on. This will prevent stiffening of the leather and make them look fresh again when you go over them with a soft cloth.

OLD-FASHIONED SPICY CHICKEN

1 young chicken (2 to 2½ pound ready to cook weight) cut up, ½ cup salad oil; ½ cup white vinegar; 1 tablespoon salt; tip of bay leaf; 4 peppercorns; 2 cloves; 1 small onion, sliced; ¾ cup flour; 1 tablespoon paprika; ¼ teaspoon pepper. Marinate chicken for about 12 hours in a mixture of the salad oil, vinegar, salt, bay leaf, peppercorns, cloves and onion. Drain thoroughly, reserving the marinade mixture. Strain the reserved marinade and let the oil come to the top. Meanwhile shake the chicken, two or three pieces at a time, in a bag containing the flour, paprika and pepper. Brown the chicken in the oil skimmed from the top of the marinade and cover. Cook slowly for about 30 minutes until the chicken is fork tender. Uncover the last 10 minutes to recrisp coating. Lift chicken to warm platter. Prepare gravy with the pan drippings. Yield: Four to Five servings.

Split pea soup makes a hearty noontime dish when it is served with rounds of frankfurters. Slice the frankfurters thin and heat them in the soup shortly before serving. Add bread and butter and a salad to the menu and all for dessert serve frosted cupcakes or fruit.

Flavor a white sauce with dry mustard, paprika and Worcestershire sauce when you are planning to use it over vegetables.

The princess dress is back in style again. It may have either a narrow skirt or a full one, but the latter seems to be the favorite just at present.

Some beautiful prints are being shown for Spring—they come in various materials—the soft tafetas are particularly lovely.

Grapes require a sunny location, fertile and well drained soil. They should be planted in a permanent location.

About Your Home

By FRANCES DELL

It is possible to achieve some startling results from the lowly burlap seed bag. Burlap material is being used to make attractive clothes, household items, drapes, slip covers and as wall covering in the place of wallpaper.

It is done with all-fabric dyes and some simple needlework. The bags must be washed and in some cases lightened with color remover. The burlap can then be dyed. Fabric dyes come in fifty colors or more.

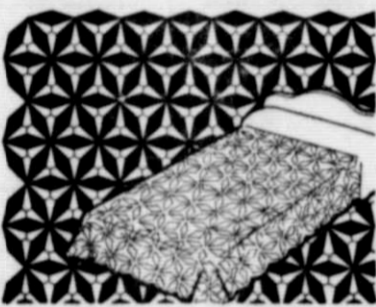
The burlap bags for conversion can be either salvaged feed bags or new ones purchased at very little cost.

Preparing the bags for dyeing is simple. Open the seams by pulling the thread of the chain stitch and stitch the raw edges on the sewing machine to prevent unraveling. To wash, place the burlap in soap suds and soak for a couple hours to remove the printing. Rinse and the material is ready for the dye-bath.

If you want to lighten the natural burlap color in order to dye the fabric a light color, just put the burlap in a color-remover solution and follow the direction on the box. Use fresh solution for each bag. However, don't use the washing machine to remove color since the large amount of water would dilute the color-remover and weaken its action.

The dyeing process is the same as for other fabrics. Use about one ounce of dye to six quarts of water for the average-sized bag.

QUILT A DIAMOND BEAUTY



Dream your dreams under a beautiful quilt cut out and pieced by you. If the family budget needs watching, try a quilt for comfort.

Use solid color or prints or a variation that will suit your individual preference. Dream away, me beauty, 'tis past the witching hour. C3317. 20c. Send orders to Handcraft Service (The Colonial Company), Journal Publishing Co., Inc., 1243 Swift, Kansas City 16, Mo.

Cinnamon Pecan Rolls Will Brighten Breakfast

By DOROTHY MADDOX

A BREAKFAST "to grow on" is vital to a good day and good health. When you serve nutritionally rich hot breads, you pack a lot of pleasure into the meal, too. Try these rolls for everybody's enjoyment.

Cinnamon Pecan Rolls (Yield: 6 cinnamon pecan rolls)

One teaspoon melted butter or margarine, 6 brown-n-serve dinner rolls, ½ teaspoon ground cinnamon, 2½ teaspoons granulated sugar, 1 tablespoon chopped pecans.

Brush butter over top of each roll. Combine cinnamon and sugar and sprinkle ½ teaspoon over each roll. Top with chopped pecans. Bake in a greased shallow pan in a hot oven (400 degrees F.) for 12 minutes. Serve immediately.

Here is how to make short shrift of preparation time: The cinnamon pecan rolls may be oven-dried the night before, refrigerated for holding and baked while the rest of the breakfast menu is in process.

Cereal ingredients, too, may be measured in the evening, for quick cooking in the morning. For easy out-of-hand eating, oranges may be cut into wedges, leaving just enough at the bottom to hold together.

We went to a luncheon recently where a new type of cake was introduced. It uses a brand name flour that gives a soft and silky texture and a popular vegetable oil. We thought it a genuinely fine cake.

"Lovelight" Chocolate Two-Egg Chiffon Cake

Two eggs, separated; 1½ cups sugar, 1¼ cups sifted cake flour, ¾ teaspoon soda, ¾ teaspoon salt, ¾ cup vegetable oil, 1 cup buttermilk (sweet milk may be substituted for buttermilk in this recipe), 2 squares unsweetened chocolate (2 ounces), melted.

Heat oven to 350 degrees F. (modern). Grease generously and dust with flour 2 round layer pans, 8 inches by at least 1½ inches deep or 9x11½ inches. Now, just 3 easy steps:

1. Meringue is the key to this cake. Beat egg whites until frothy. Gradually beat in ½ cup of the sugar. Continue beating until very stiff and glossy.

2. Only 2 minutes batter beating. Sift remaining sugar, cake flour, soda, salt into another bowl. Pour in oil, half of buttermilk. Beat 1 minute, medium speed on mixer or 150 vigorous strokes by



Serve cinnamon pecan rolls for a breakfast that is both pleasing and nutritionally rich.

hand. Scrape sides and bottom of bowl constantly. Add remaining buttermilk, egg yolks, chocolate. Beat 1 minute more, scraping bowl constantly.

3. Simple folding of meringue assures fluffy texture. Just fold meringue into batter by cutting down gently through batter, across the bottom up and over, turning bowl often. Pour into prepared pans. Bake layers 30 to 35 minutes. Cool. Split each layer into two layers. Spread chocolate fluff between layers and over cake. Store in refrigerator until used.

Chocolate Fluff

Mix together in chilled bowl 2 cups whipping cream, 1 cup sifted confectioners' sugar, ½ cup cocoa, dash of salt. Beat until stiff enough to hold a point.

National Geographic Society Has New United States Historical Map

The National Geographic Society has completed the largest map-making project in the 55-year history of its cartographic section and has started issuing the result—a 10-color historical map of the United States—to its 2,150,000 members.

In 41-by-26½-inch size, it is being distributed with the June issue of the National Geographic Magazine, the editorial content of which was carefully selected to complement the map. Larger copies, 67 by 43½ inches, can be obtained through the Society's headquarters at Washington.

Dr. Gilbert Grosvenor, president of the Society and editor of its Magazine, planned the map to commemorate the 150th anniversary of the Louisiana Purchase in 1803, that "most momentous real estate deal in history" by which the United States doubled the size of its territory.

Ten Months' Research

Chief cartographer James M. Darley and a senior assistant, Wellman Chamberlin, spent ten months in research before the first drawings were made. Investigation of past and present history fortunately continued even after the lithographic presses started to roll.

Soon after the first copies were printed, Chief Sitting Bull's bones were moved from North Dakota to South Dakota, thereby making one of the map's 912 historical notes obsolete. The presses were stopped. Plates were corrected, and only the first few copies fail to note the famous Indian's present resting place.

Seventeen members of Mr. Darley's staff worked 7,764 hours on the project. Among their tasks was the charting of 14 historic exploration routes and major pioneer trails to the West.

One route is that of the Lewis and Clark Expedition, which first crossed the Louisiana Territory. The leading article in the June Magazine is an account of a trip made last summer over the very same route by National Geographic writer-photographer Ralph Gray.

Three Enlarged Insets

The map has three large-scale insets, two of them of the East coast, where America began. The third shows graphically how the Thirteen Colonies of 1783 grew through purchase and annexation into the United States of today. Where many published maps of the Louisiana Purchase overlooked the lengthy disputes involving several small portions of the Territory, this inset is accurate to the last date and square mile.

Along with the historical map and the accompanying articles, the June Magazine for the first time in the Society's history contains page maps in color. There are six in four colors, two in black and white. Most are reproductions by Society cartographers of old maps important in American history.

Included are Capt. John Smith's early 17th century charts of Virginia and New England, and the Mitchell map used by both British and American generals in Re-

LONG-EARED OWL



LONG-EARED OWL

© 1953 National Wildlife Federation

It is unfortunate that this 16 in. owl with a 42-in. wingspread resembles superficially its close relative, the Great-horned Owl, that has a length of 23 inches and a wingspread of 52 inches. In spite of the fact that the Great-horned Owl may feed heavily on rabbits and on rats and mice that feed on agricultural crops, hunters generally kill the bird because it does take game birds and mammals now and then and sometimes domestic poultry. With the subject of this account, the Long-eared Owl, the food record is such that there is little excuse for its being killed. The food of the Long-eared Owl is overwhelmingly mice and rats and similar harmful, small mammals.

The Long-eared Owl is about the same size as the Short-eared Owl and each is slightly shorter than the 21-inch crow. While the Short-eared Owl commonly seeks its food of mice during the daytime, the Long-eared Owl more commonly feeds at night. Both are conspicuous friends of the farmer and for that matter of all of us.

Aside from the difference in size between the Long-eared & the Great-horned Owls, the Long-eared seems to be streaked lengthwise while the Great-horned seems to be barred crosswise. Both may show conspicuous ears at times. The Long-eared Owl weighs only about 11 ounces while the Great-horned Owl may weigh to 3½ pounds.

The Long-eared Owl breeds from central British Columbia to Newfoundland and south to California, Texas and Virginia. It winters from southern Canada to Florida and central Mexico so it may be found at some time of the year anywhere in the United States in suitable country. Given a choice this owl favors evergreen forests but in migration it may be seen almost anywhere.

The nest of this owl is usually found from 10 to 30 feet up in an evergreen tree and frequently is a

volutionary War campaigns. A third is the Aaron Arrowsmith map of 1795.

The latter should settle many claims as to what towns George Washington visited. All the first President's travel routes are printed upon it. It shows indisputably that Washington was the most widely traveled American official of his age.

The effectiveness of a sleeping bag to retain normal body heat is in direct proportion to its thickness and not to its weight. —Sports Afield.

remodelled nest of a crow or heron. The 3 to 7 eggs are white and smooth. They measure 1¾ by 1½ inches and are laid on alternate days. Incubation begins immediately so it is possible that by the time the last egg hatches the young owl must compete for food with a brother or sister who is two weeks older. This probably means starvation for the youngster unless food is so abundant that the older brothers and sisters just cannot eat all brought to them. It may be seen from this that the more mice and rats an area may have, the more of these owls are likely to be produced and the greater is the need for these birds. This story is one of the most interesting things we find in Nature illustrating how numbers take care of themselves if man will only give Nature a chance. Fortunately, these owls are protected in most parts of the country.

The National Wildlife Federation recognizes as one of its obligations the development of an informed public that will be rational in its relations with wildlife. There are those who seek the protection of this owl for sentimental reasons, but this kind of support should not be necessary to any sensible person who recognizes the destructive capacity of rats and mice.

—E. Laurence Palmer

Bible Comment:

Is Today's Trend Toward Unification Of Churches Good?

THE young observer of today who sees extensive movements toward church union can hardly realize how completely a generation or two ago the trend was the other way.

Sectarianism and divisiveness were not only in the air, but right on the ground, with hard practical reality.

In one Canadian town then there were two sorts of Methodism, each church representing a different organization. There were additional sorts of Methodism throughout the country.

There were, likewise, two sorts of Presbyterianism, and there may have been others as well.

Wherever some presumably prophetic soul or ambitious leader thought he had discovered a new idea, he proceeded to build a new, and sometimes a very narrow and intense, denomination around it.

That rank growth of the sects was in a sense the disgrace of Protestantism, but it also had in it a touch of Protestant glory—the emphasis on freedom.

Like all great men and good things, freedom is capable of abuse. But freedom is nevertheless great and good.

Today the trend is all the other way. Controversy has almost disappeared. The things that divided are hardly mentioned.

Yet one Scottish church leader not long ago spoke of "good controversy" as a great need of our time.

And we might well ask whether with all the undoubted gains in present trends we are not in danger of losing some of the essential values of the times when Christians laid so much stress upon their conscientious convictions and were aware toward compromise.

JACKIE THE RABBIT



Meet the newest member of the kitchen brigade! Jackie will give things a clean sweep, sample all the goodies or entertain you in various ways each day of the week and save you from burned fingers as well. This is a usable-several-times Hot Iron Transfer. No. C3311, 20c. Send orders to Handcraft Service (The Colonial Co.), Journal Publishing Co., Inc., 1243 Swift, Kansas City 16, Mo.

The SNAPSHOT GUILD



Table-tops can be simple indeed. Here is a very effective situation, created simply by the use of three dolls with a turkish towel for sand.

A Camera, a Table, and Your Imagination

ARE you looking for something a little different to do? Most people are about this time of year. We tend to have extra time on our hands and are a little bored by most of the usual activities.

So, here's a suggestion for something different. Why not try your hand at table-top photography? It's something you can work on alone—or the whole family can get into the act for an evening of fun. All that you need is your camera, a table, and a little imagination.

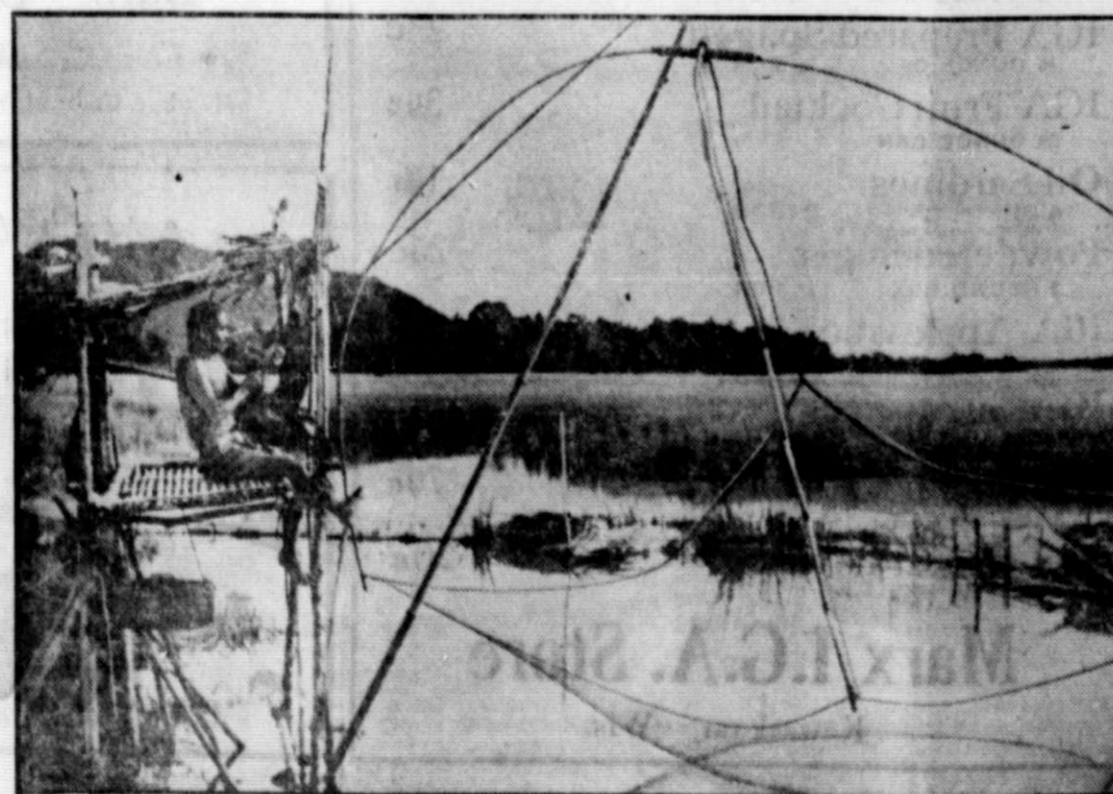
"Table tops" are pictures of miniature scenes you arrange on the top of a table. Arranging these scenes is a challenge to the imagination and you can let it run wild. Every household has a wealth of props for creating these sets. You can draw heavily on the youngsters' toys for such things as doll furniture, small automobiles, trains and the like. Mother's collection of figurines will be a good source

of people and animals. A piece of cardboard on the wall behind the table makes a sky. Cotton on the table makes snow . . . a piece of glass becomes a lake . . . sand, or even sugar, becomes a beach.

When your scene is all set, here's how you take your picture. If your camera is the box type, which means you can't get closer than six feet to your subject, you'll want to use a close-up attachment over the lens. That way you can move in close enough for your scene to fill the viewfinder. Without a close-up attachment, get as close as your camera will permit and then have the principle part of the picture enlarged.

To light the scene, you can use flash on your camera . . . or since there won't be any movement here, you can make it a time exposure and use a couple of ordinary household bulbs as your light source.

—John Van Guilder



RICE-PADDY FISHERMAN—A rice farmer in Kedah, Malaya, hopefully drops a fishing net into the shallow moat surrounding his rice paddies. The net is supported by bamboo poles.

SPORTS AFIELD

By Ted Kesting

Jason Lucas, angling editor of Sports Afield magazine, doesn't think much of anglers who put their equipment away in the fall and forget about it until spring. Now is the time to overhaul your tackle, to check for wear and make necessary repairs.

A bamboo rod that has been used much will need a new coat of varnish each season. A light coat of varnish will greatly improve the appearance of a glass rod; even a steel rod will be the better for varnishing.

The varnishing job is the same on all rods. Go over the finish with 00 steel wool. This rubbing down should be light, just enough to dull the old coat and give a "tooth" for the new. After using the steel wool, wash the rod with a rag and gasoline or carbon tet. Then don't touch any part that's going to be varnished—even a slight trace of natural oil from your fingers can keep the new coat from sticking well.

For a good job, the room tem-

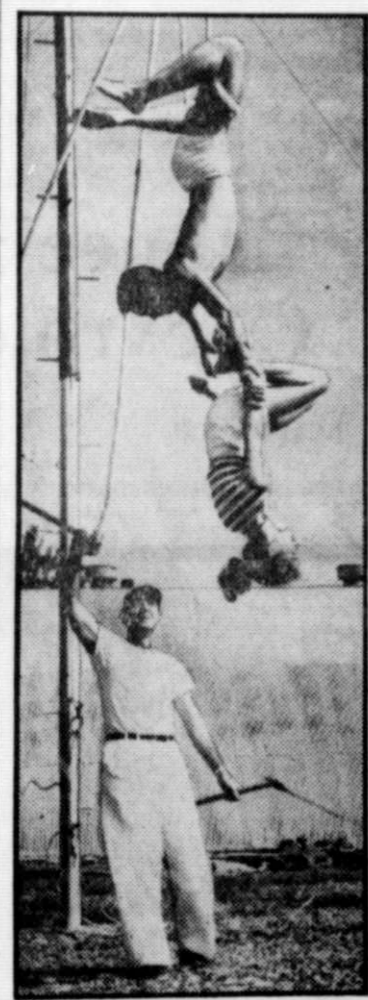
perature should be at least 70 degrees F. It is best to work alone in a closed room; don't move around any more than you have to or you'll stir up dust that you can't see until it's on the rod, sticking out like a sore thumb.

Use only a rod varnish put out by a reliable tackle company. Rub a little of this varnish between your thumb and forefinger and wipe it onto the rod. Do this quickly, and don't rub it in or you'll mess things up. A glance at the rod against the light will show if you're missing any spots. Do not put on a heavy coat. You might think a heavy coat would look better, last longer, or give more protection. Actually, it does the exact opposite of all three. The lighter the coat the better, just so it covers every-where.

Hang the rod, by the ferrules or guides, in a closet where there will be no air stirring. By morning the varnish should be dry enough to be safe from dust, but perhaps it won't be safe to handle for at least 12 hours more. A good elastic rod varnish is slow drying. The fast-drying kind gets brittle and cracks under the bending a rod is subjected to.

The normal man, sleeping or loafing, liberates about 50 calories of heat per hour; this can be increased by eating or exercise, including shivering which will increase heat output several times. —Sports Afield.

Best insulation known is dry, still air.—Sports Afield.



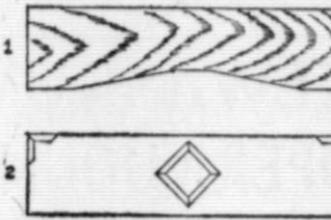
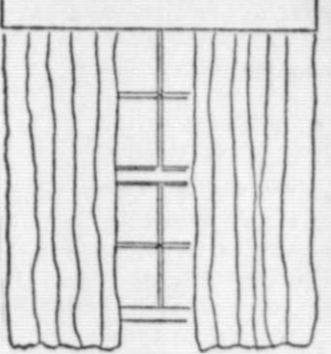
3-RING CURRICULUM—Taking their education with a grain of sawdust, two Florida State University students rehearse their act prior to their school's recent student circus. The aerial acrobats are shown above with Coach Jack Haskin.

HERE'S HOW...

MAKE A VALANCE BOARD

Attractive, easy-to-construct valance boards hide unsightly curtain rods.

The window width (including woodwork) is the inside



MAKE A VALANCE BOARD

Valance boards, attractive panels of wood, lend a finishing touch to the window, and hide the hardware and curtain rods that often are eyesores in an otherwise well-decorated room. The boards are easy to construct and provide a wide variety of decorative possibilities.

The length of the valance board will depend upon the size of the window. Where the entire window, including woodwork, is to be spanned by the valance board, the outside dimensions of the window become the inside dimensions of the valance board.

A simply-constructed valance board consists of three pieces. A top that fits along the head of the window, a plain face that extends downward from the top, and a short bracing piece at each end. The width of the top piece determines the distance between the face and the window. Generally a top 6 inches wide is sufficient to provide a short lip for fastening to the window head, and to allow about 4 1/2 inches clearance for the curtain rod. The bracing piece is of 1-inch stock, 2 inches wide; the top and face are nailed to the brace, but the brace is not nailed to the window. It fits flush against the side of the window head and reduces the strain on the top piece, thereby preventing sag.

Panels with attractive grain often make attractive valance boards without the necessity of adding further decoration. However, a piece of stock moulding at the top or bottom edge provides a slight but impressive decorative feature. Stock moulding, obtainable in many shapes and sizes may be used to form patterns to decorate the face, or half-round moulding may completely cover it. Where long straight lines do not conform to the decorating scheme, the bottom edge of the face panel may be fancy cut.

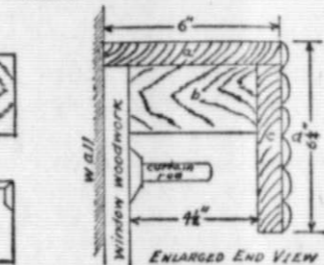
When heavy drapes are used, the valance board may be attractively covered with cloth of the same material in either identical or contrasting color. The same valance board, if made originally to display a wood panel, may thus be used for a number of different decorative schemes.

The guidance of your local lumber dealer will be helpful in selecting the proper wood for the job, especially if the face panel, when finished, is to display the natural grain of the wood.

This job is an easy one for the home workman. He needs only a hammer and saw; but a carpenter's square will help, as will also a brace and bit, if the top of the

length of the valance board. End measurements are given below, using 3/4-inch lumber. Piece (a), the cover, has a lip that may be fastened to the woodwork with screws. If (a) is not used, hardware brackets are necessary. Piece (b), 2 inches wide braces against the woodwork. Piece (c) may be covered with moulding (d), or otherwise decorated, or the natural grain may be displayed. Straight lines may be broken (Fig. 1), or nailed or glued designs made from stock moulding (Fig. 2).

The board shown at the left has a moulding strip at the top. Plain boards may be covered with cloth to match or contrast with the curtain or drape material.



ENLARGED END VIEW

valance board is to be fastened to the window head with screws. Moulding designs may be either nailed or glued on the face panel. After the first valance board is completed and the workman is sure of his technique, the pieces for other windows may be pre-cut for rapid assembly.

Poison Gas Danger Worse in Winter

Late-model heating systems are no guarantee against deadly carbon monoxide gas poisoning.

In view of the fact that the worst winter weather is likely to be ahead, the doctors urge a special check on furnaces, new and old, and on stoves and gas heaters to see that flues, chimney connections, hot air ducts and dampers are all in order and operating safely.

Several people have already died or been injured because odorless poison gases have been released into tightly closed homes and basements, it is reported. Colder weather makes the danger even greater.

The chief trouble in the case of furnaces lies in checking too closely and closing the damper too far. When the damper is closed the inevitable gases have no place to go except up into the house.

Portable oil heaters and gas hot water heaters that are not properly vented to the outside are also a continuing source of trouble. The oil heaters are most dangerous when they are used in small closed rooms, such as bathrooms. Several hours of washing in a basement where an unvented gas water heater was operating was fatal, also, to one housewife already and unrecognized illness from the same cause has probably occurred in many other cases.

Chimney connections should be checked, too, because a leak between flue passages and hot air ducts can turn the duct into a free passageway for gases.

As little as one or two parts of carbon monoxide gas in 1,000 parts of air can cause death if it is breathed for several hours, the doctors point out. Less than that, with shorter exposure, can cause illness. Symptoms are lassitude and weakness followed by nausea and headache and sometimes symptoms are not even noticed until the victim is too weak to escape.

American sportsmen average 14,940 miles of road travel a year compared to a national average of 9,557.—Sports Afield.

"UNTO THE FOURTH AND FIFTH GENERATION

At one and a half years of age Robert Erkel, and sister Paula at 2 1/2, enjoy a distinction reserved for very few on this mortal coil: all four of their great-grandmothers are living, well, and close by to "spoil" them; home base is Le-Center, Minn. . . . From petite Mrs. Minnie Layman, 95, to three great-grandchildren (one in service, one at work, and a school girl of 10) four generations live under one Hutchinson, Minn., roof. . . . Five generations recently were united at Renville, Minn., when Great-Grandfather Andrew Olson, 90, came over from Hinckley to see Great-Granddaughter LaDonna Jean Hebrink.



TOUCH OF OLD—Swimsuits sport tiny sleeves for the coming resort season, harking back to grandma's day when ladies "covered up" in the sun. The romper swim-and-sun suit is a Claire McCardell creation.

LAST ROBINS OF FALL, OR FIRST OF SPRING?

Worthington, Minn., sighted a robin January 12. . . . Several robins in the area prompted Waseca, Minn. Herald to remark, January 14, that perhaps they can't read the thermometer. . . . Same day Waconia, Minn., even farther north, reported bright-plumaged robins. . . . Eagle Lake Minto, and Rochester, Minn., reported some of these hardy and cheery harbingers of warmer days.

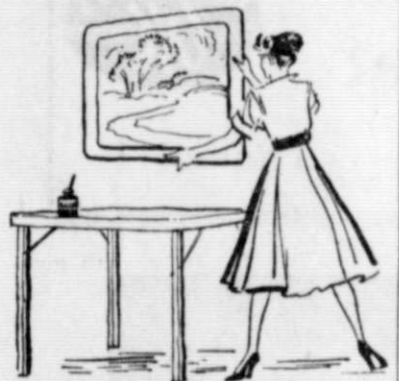


Picture Mounting Board

ARTISTS like to feel that their paintings are not only for contemporary enjoyment but "for the ages." In time, canvas will rot. Of course, it is fragile to begin with and subject to tears and rents.

Many artists nowadays are using a modern building material, Masonite Tempered Presdwood, available in lumber yards, instead of canvas. It's easy to paint on, and its durability is unquestioned.

In addition to being useful for the painting itself, the Tempered Presdwood makes an ideal backing



for artistic work executed on paper or canvas. As illustrated, the artist simply attaches the painting on the hardboard with waterproof glue, leaving a properly proportioned margin around the edges.

Corners of the backing material should be rounded and the exposed edges lightly sanded. To hang a picture or photograph mounted in this manner, use picture wire, attaching it to the back of the hardboard by means of glued-on paper hangers.

Tempered Presdwood sawed into small rectangles or even into special shapes with a coping saw, which cuts curves, is an ideal mounting for the display of snapshots or photo enlargements. Use rubber cement, so that occasional changes of picture may be made.

WEEKLY CROSSWORD PUZZLE

National Flag

- HORIZONTAL**
- 3 Tear
 - 4 Pronoun
 - 5 Skin disease
 - 6 Time measure
 - 7 Pillaged
 - 8 Its capital
 - 9 Bone
 - 10 Beverage
 - 11 Hire
 - 12 Considered
 - 13 Tellurium (symbol)
 - 14 Altar screen
 - 15 Part of "be"
 - 16 Volcano in Sicily
 - 17 Pen
 - 18 Deceased
 - 19 Old
 - 20 Palm lily
 - 21 Myself
 - 22 Medical suffix
 - 23 Promissory note (ab.)
 - 24 Speck
 - 25 Roman date
 - 26 Sound
 - 27 Belt
 - 28 Ruthenium (symbol)
 - 29 German
 - 30 Preposition
 - 31 War god
 - 32 The — is its monetary unit
 - 33 Foot of an animal
 - 34 Rhymes
 - 35 Fancy
 - 36 Old name for Urfa
 - 37 Assailed
- VERTICAL**
- 1 Dozed
 - 2 Drug

Here's the Answer



THESE WOMEN!

By d'Alessio



"Hannah! Copying out of my diary again, eh?"

Ticklers

By George



"The boys have been tackling much harder ever since we got a practice dummy that looks like the dean!"

Behind The Scenes In American Business

By Reynolds Knight

New York—Manufacturers of farm machinery are recalling workers. This important industry spent almost all last year in its own private recession. If this slump is now ending, it may be a good omen for other similarly affected groups.

The slump in farm equipment began last March and April. Dealers had bought tractors, plows, and other ground-preparing equipment at 1952's lavish rate. They couldn't sell it. As the year went on layoffs mounted. At 1953's low tide, employment was 12,000 or 15,000 workers below 1952's high. It would have fallen more, but machinery makers had other lines to which they could shift men.

Rehiring has far to go to retrace its way to the 1952 peaks. Probably half will be called back by April 1. But it does represent a reversal of the downturn.

Significance for all the rest of us is that farm machinery inventories have been worked down, & production is starting back up without any of the inflationary remedies which have been urged to combat the supposed recession. At least, this shows that natural recovery can happen. At most, it offers encouragement for sitting tight and refusing to get panicky, while each industry works out its own problems.

For most industries—as the December-to-January decline in the Federal Reserve Board production index discloses—the low point is still ahead. But there are signs that it can be reached and passed. —without the help of renewed deliberate inflation.

MORE, BIGGER, CLEANER—Bigger kitchens, in which the whole family can turn to and help with the housework, are one dividend of the disappearance of domestic servants, is the happy report from clay floor and wall tile manufacturers.

The pleasure they find in this trend comes from the fact that these larger kitchens must still be made easy to wipe up and keep clean. This, say the tile people, naturally turns the homemaker's mind toward tile.

A second hopeful factor for 1954 is the emergence of a buyers' market in new homes. Builders are being forced to give more features of better quality to woo prospective purchasers from competitors. A recent survey of enterprising home builders showed they were concentrating on the bathroom, another major market for clay tile, in their competitive endeavors. Large builders stress larger baths, more baths per house, larger areas of tile in each bathroom, along with better lighting and built-in heaters.

THINGS TO COME—Do-it-yourself for motorists gets a boost from a kit designed to let the owner clean his own carburetor periodically. . . . Stainless steel is now available in powder form to make molded parts for machinery. . . . A repair kit for fixing porcelain vessels includes a glaze to conceal the tell-tale dark line where the article was cemented together. . . . Makers of a plastic wrapping for prepared frozen poultry say all that's left for the housewife is to light the oven and tell time. . . . Coffee containers for the refrigerator have a moisture-proofing element built in.

COFFEE, ANYONE?—The foreign service of the Department of Agriculture, told a month ago to prepare a report on coffee supplies which would allay fears of a shortage, is sitting on a bomb with a very short fuse. The report will be ready in two weeks, and it will show coffee much shorter than has been feared.

That much-advertised frost in Sao Paulo doesn't affect the coffee already bagged, of course. What has happened is that roasters have been bidding up future prices to protect themselves against a shortage that they saw only as a future problem. Now it develops that shortage of supplies is already here, to an extent unrealized.

The Germans and Swedes, great coffee drinkers by Europe's standards, have been replacing U.S. firms as machinery suppliers to the Brazilian market, and taking some of their pay in coffee. German coffee use, at one time down to only a third its prewar level per capita, is almost back to former totals.

Moreover, Brazilian statistics are very imaginative, compared with the austere U.S. variety, and U.S. traders always discount them. This time the cries of wolf are accurate, the Washington searchers are convinced. They will report their findings just about the time the last stocks of cheaper coffee are used up.

A total of \$11,784,903 in federal aid was divided among the 48 states in 1953 for restoration and development of fish and wildlife. —Sports Afield.

In the Service

KOUGL HOME, TRANSFERRED

Francis J. Kougl, AD2, and wife are spending a leave with the former's parents, Mr. and Mrs. F. J. Kougl, Sr. on R. 1, Kewaskum, Wash. who was formerly stationed on Whidbey Island, Oak Harbor, Wash. His new address is Francis J. Kougl AD2, USS, Yorkton, (CVA-10), P. O., San Francisco, Calif.

FABER COMPLETES COURSE

Pvt. Wayne W. Faber, son of Mr. and Mrs. Wilmer Faber, Kewaskum, recently completed the airborne course at Fort Benning, Ga. The course is designed to train volunteer officers and enlisted personnel from all branches of the service as qualified parachutists.

DOROTHY ANN MILLER, GEORGE JOHNSON WED

Mr. and Mrs. George A. Johnson are at home at 1126 Park Ave., West Bend, following their marriage Saturday, Feb. 27, at 2 p. m. at Marshalltown, Iowa, performed by the Rev. John Mohr, pastor of the Evangelical and Reformed church of Campbellsport, Rev. Mohr was at Campbellsport for 14 years and also confirmed George. The quiet ceremony took place at the E and R church at Marshalltown.

The bride is the former Dorothy Ann Miller of 325 10th Ave., West Bend, daughter of Mr. and Mrs. Milton Broost, and the groom is the son of Mr. and Mrs. Harold C. Johnson of Campbellsport. The bride and groom were preceded to the altar by Mr. and Mrs. Harold C. Johnson, both attired in navy blue suits.

The bride was very attractive in a red and black checked spring suit. Her hair was adorned with a tiny crown of red roses and blue carnations. Her corsage also was made up of tiny red roses and blue carnations.

A wedding dinner was served in the "Pagoda Room" at Elias, a nationally known restaurant at Marshalltown.

Mrs. Leonard Shaudvitis of Campbellsport, sister of the groom, also attended the wedding.

Mrs. Johnson is employed at the Schultz Variety store in West Bend and Mr. Johnson is employed at the West Bend Aluminum Co.

CARD OF THANKS

Our sincere thanks are expressed to our relatives and friends for the kindness and sympathy extended to us in our bereavement, the sad loss of our dear mother, Mrs. Lawrence Ketter. We are especially grateful to Father La Bovi, the choir and organist, pallbearers, Ladies' Altar society, traffic officer, Miller's, drivers, for the floral and spiritual offerings, and to all who showed respect.

The Surviving Children

You can't take it with you—the government gets it before you do.—Cuba City News Herald.

H. W. FICK

INSURANCE
656 Wolcott St. WEST BEND
Phone 1451-J

KEWASKUM THEATRE

SUN.-MON. MAR. 21-22
Mat. Sun. 2:00 (One Show)
2 Shows Eve 7:00 & 9:10



TUES.-WED. MAR. 23-24



THUR.-FRI.-SAT., MAR. 25-26-27
DOUBLE FEATURE STARTING AT 6:45



SUN.-MON. MAR. 28-29
"3 SAILORS AND A GIRL"

DUNDEE

A son was born to Mr. and Mrs. Arthur Kufalk in Milwaukee Tuesday, March 9. Mrs. Kufalk is remembered here as Miss Arlene Mielke, daughter of Mrs. Lena Mielke.

Mr. and Mrs. William Wotho received the news Tuesday that a son was born to Mr. and Mrs. David Wotho at Brillion, where David is agriculture teacher.

Dr. and Mrs. Harry Ladewig of Milwaukee spent the past week with Mr. and Mrs. Reuben Drewitz. Mr. and Mrs. George Hackbart and children of Fond du Lac visited Thursday evening with the former's brother and sister-in-law, Mr. and Mrs. Bill Hackbart.

Mr. and Mrs. Carl Becker and son Carl, Jr. visited Sunday with the former's mother, Mrs. Ida Becker, at Long Lake and the evening with Mr. and Mrs. C. W. Baetz.

Mr. and Mrs. William Lenz and children visited from Thursday until Sunday with the former's parents, Mr. and Mrs. Wm. Lenz, Sr. at Wauzeka.

Mrs. Harry Crumbly of Canton, Ohio, is visiting this week with her son and daughter-in-law, Mr. and Mrs. Clarence Riegler.

Mr. and Mrs. Russell Brantner and Mr. and Mrs. Anton Stusek and Mr. and Mrs. Al Gaertner spent the week end at their cottages at Long Lake.

NEW PROSPECT

Mr. and Mrs. Arno Meyer of Waldo visited Mr. and Mrs. Geo. H. Meyer Wednesday.

Mr. and Mrs. Frank Bowen visited the latter's sister, Mrs. Barbara Schneider at Oshkosh Thursday.

Sixteen young people spent Friday evening at the home of Edith Meyer to help celebrate her birthday anniversary.

Mr. and Mrs. Joe Kohnen of Fond du Lac visited the latter's parents, Mr. and Mrs. Erwin Matthies Sunday afternoon.

Friends and neighbors gathered at the home of Mr. and Mrs. Paul Giese Wednesday evening, March 13, to help celebrate the latter's

MODERNIZE YOUR HOME

and **SAVE DOLLARS AND WORK** for years to come. We offer a line of weatherstripping Alumatic Aluminum Combination Windows and Doors, Alumaroll Awnings and Weather-Way Canopies, porch & step railings, Pella folding doors, Verti-Blinds, floor & wall tiles, sink & table tops.

All work done by competent Trained Mechanics and Guaranteed to Satisfy.

Install it yourself
CHRISTENSON SALES
Office and Display Room
728 2nd Ave., West Bend
Phone 744

SMOLEY'S MINIATURE ALLEYS

Mr. and Mrs. Frank Bowen in company with Mr. and Mrs. Jerome Bowen and family of Dundee helped celebrate the birthday anniversary of Mrs. Leo Bowen at Plymouth Saturday evening.

FARM BUREAU OF COUNTY WOULD END PRICE SUPPORTS

A drive to win congressional support for termination of fixed price supports on basic farm commodities and a return to variable supports based on supply and demand was put in motion this week by the legislative committee of the Washington county Farm Bureau. The campaign is part of a nationwide policy action program of the American Farm Bureau. The Farm Bureau is backing Secretary of Agriculture Benson's move to lower price supports on dairy products from 90 to 75 per cent of parity on April 1.

ATTEND OPEN HOUSE FOR BUILDING CONTRACTORS

Mr. and Mrs. Lester Dreher and Mr. and Mrs. August Ebenreiter attended an open house for building contractors given by the Ebenreiter Lumber Co. of Sheboygan, who have recently expanded in an extensive manner into the building materials line. Contractors from triles around attended this event and all were very interested in the new and modern materials on display for building homes. An informative talk was given by Bob Ebenreiter and later a delicious lunch was served. On March 19 and 20, there will be another open house for the general public.



FRI.-SAT., MARCH 19-20
"THE GLENN MILLER STORY"

SUN.-MON.-TUE., MAR. 21-22-23
Continuous Show Sunday 1:30 p.m.



WED.-THUR.-FRI.-SAT.
MARCH 24-25-26-27

A THRILLING STORY OF THE MARINES IN ACTION
TONY CURTIS IN
"BEACHHEAD"
IN TECHNICOLOR

COMING!
"MONEY FROM HOME"
"SASKATCHEWAN"

LADIES LEAGUE STANDINGS

| Won | Lost |
|----------------------|-------|
| Smoley's Bowles | 53 25 |
| Meta's Sweet Rollers | 41 37 |
| Johnson's Grillettes | 32 46 |
| Serwe's Tappettes | 30 48 |

Week's high—High 3 games team—Meta's 3291; high 1 game team—Meta's 1213; high 3 games individual—Meta Heimerman 754; high 1 game individual—Meta Heimerman 297.

MEN'S LEAGUE STANDINGS

| Won | Lost |
|------------|-------|
| Del's | 49 26 |
| Dutch Mill | 40 35 |
| Fremont | 35 42 |
| Flynn's | 29 46 |

Week's high—High 3 games team—Flynn's 3253; high 1 game team—Flynn's 1119; high 3 games individual—Ray Schneider 713; high 1 game individual—Wally Anderson 267.

COUNTY YOUNG ADULTS CLUB MEETS, PLANS TO BUY LAND

The February meeting of the Washington County Young Adult club was held at the home of Mr. and Mrs. Daniel Wagner.

The meeting was opened by the president. Minutes of the last meeting were read and approved. Business at the meeting included deciding on a club project for 1954, and

Math. Schlaefter OPTOMETRIST
Eyes Tested and Glasses Fitted
Campbellsport, Wis.

Beef
by the
Quarter
or
Side
BEST QUALITY
BEST PRICES

Stellpflugs
Finer Meats
Since 1879

WRITTEN WARRANTY "OK" USED CARS and TRUCKS

- Chevrolets**
- 1953 "210" 4-D
 - 1952 STYLELINE DELUXE 4-D
 - 1952 STYLELINE DELUXE 2-D
 - 1950 STYLELINE DELUXE 2-D
 - 1949 STYLELINE DELUXE 4-D
 - 1948 FLEETLINE AERO 2-D
 - 1947 FLEETLINE AERO
 - 1946 STYLEMASTER 2-D
 - 1942 STYLEMASTER 2-D
 - 1941 SPECIAL DELUXE 2-D
 - 1940 MASTER DELUXE 2-D
 - 1939 4-D

- Other Models**
- 1953 PONTIAC CHIEFTAIN D.L.
 - 1951 NASH 4-D
 - 1949 MERCURY 2-D
 - 1948 PLYMOUTH SP. DEL. 4-D
 - 1948 PLYMOUTH CLUB COUPE
 - 1948 NASH 600 4-D
 - 1946 NASH 600 4-D
 - 1940 BUICK SPECIAL 4-D
 - 1946 DODGE 4-D
 - 1940 CHRYSLER 4-D

Used Trucks

- 1951 CHEV. 1/2-TON PICK-UP
- 1950 CHEV. 1-TON PICK-UP
- 1950 CHEV. 2-TON L.W.B.
- 1949 CHEV. 2-TON L.W.B.
- 1944 DODGE 1 1/2-TON L.W.B.
- 1937 CHEV. 1/2-TON PANEL
- 1937 CHEV. L.W.B. 1 1/2-TON
- 1936 INTERNATIONAL 1 1/2-TON

E-Z TERMS ARRANGED
YOUR BUICK & CHEV DEALER
SCHILL MOTOR INC.
Open Evenings 'Till 9
Campbellsport Phone 111 Ashford Phone 36F1

payment of club dues.

Following a discussion, a motion was made that the club project would be buying some land to donate to the 4-H clubs of Washington county for a 4-H forest. A committee was appointed to decide on the way to raise money for it, and they have decided the club would have a public card party on March 21 at Newburg. Everyone is invited to attend this card party.

Anyone with rural interest, and 17 years old or over, married or single, can become a member of the Washington County Young Adult club.

Dorothy Krebs,
Club Reporter

KEWASKUM OPERA HOUSE Tavern & Ballroom SAND WICHES

at all times
HALL FREE
for all
WEDDING DANCES
DEI'S DELICATESSEN
BAKED HAM
POTATO SALAD
ROLLS
OPEN EVENINGS
AND ALL DAY SUNDAY
Complete Line of Groceries and Lunch Meats
Kewaskum Opera House Building

NINE WINES... SWEET AS THE FRUIT
Berrycup Wines
100% Pure
Produced and Bottled by Quality Fruit Wines Corp., Yankers, N.Y.

OK USED CARS
MONEY SAVING Specials
GUARANTEED QUALITY

- 1953 CHEV 210 — 4-DOOR — POWERGLIDE
- 1952 BUICK RIVIERA DYNA LOW — LIKE NEW
- 1946 CHEV. AEROSADAN, NEW PAINT
- 1947 HUDSON 2-DOOR, GOOD SHAPE
- 1948 CHEV. 2-DOOR, VERY GOOD
- 1947 PLYMOUTH 4-DOOR, EXCELLENT
- 1952 CHEV. 2-DOOR POWERGLIDE
- 1941 FORD 4-DOOR, VERY CLEAN
- 1940 CHEVROLET 4-DOOR, GOOD—NEW PAINT
- 1941 CHEV. 4-DOOR, OVERHAULED, NEW PAINT, USED TRUCKS
- 1953 CHEV. 1/2 TON PICK-UP, LIKE NEW REASONABLE
- 1948 DIAMOND T C. O. C.
- 1946 CHEV. 1 1/2 TON LOW PRICE
- 1946 DODGE 1 1/2 TON GOOD FARM TRUCK W/HOIST
- 1948 CHEV. DUMP TRUCK LOW PRICE
- 1947 CHEV. 1/2 TON PICK-UP, NEW PAINT

Honeck Chevrolet
Kewaskum, Phone 111

Be Modern..

Cook Electrically!

Yes... join the thousands of women who let ME do their cooking!

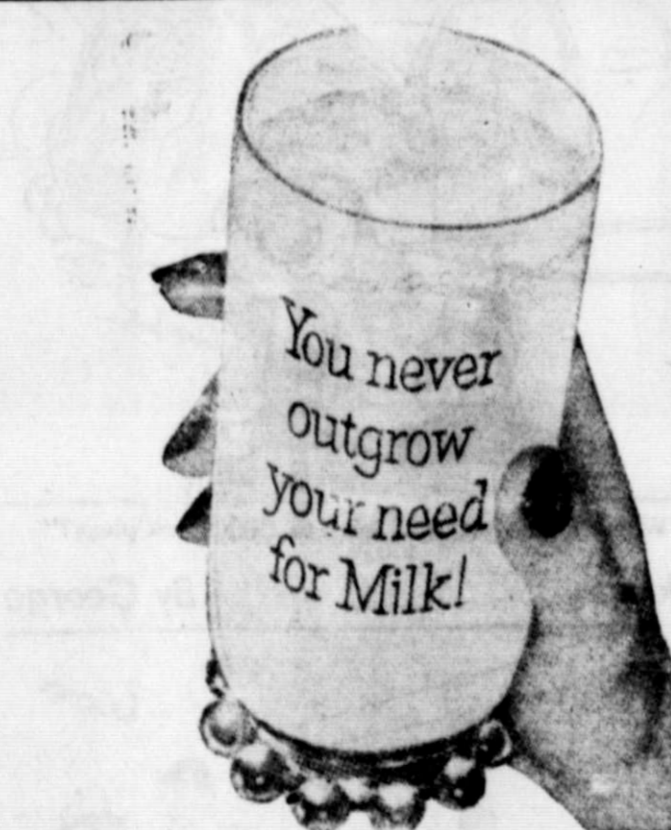
Today's Electric Range is COOL... CLEAN... FAST... FULLY AUTOMATIC. ALL YOU do is put your meal in the oven... set the controls... and forget it. I take over from there and, believe me, I'm some cook!

Another wonderful thing about Electric Cooking is its LOW COST... only a few cents a day!

How about letting me cook for YOU? Get your Electric Range TODAY.

SEE YOUR DEALER OR...

THE ELECTRIC COMPANY
WISCONSIN ELECTRIC POWER COMPANY



YOUNG OR OLD, you never outgrow your need for milk. Remember this—milk is one of nature's most complete foods and the only practical source of the calcium you need for teeth, bones and body functioning. Drink at least three glasses of milk every day. Then you'll be sure you are getting enough for your daily calcium requirement. And sav... milk tastes good, too, doesn't it?

Barton Dairy
Ted J. Schoofs, Proprietor
KEWASKUM PHONE 154-R