





# Sports Afield

By Ted Kesting

In the not so dim, distant past hunting dogs of practically all breeds competed on even terms in both bench shows and field work. But in more recent years many of the breeders in the bench-show fancy have been aiming their efforts toward breeding setters and pointers for beauty only without regard to field performance. As a result, the dogs that win on the bench show a considerable difference in appearance from those that win in the field. However, this has not been true in all sporting breeds, according to dog expert Henry P. Davis.

The German short-haired pointer fancy has been particularly active in maintaining proper type in their field dogs and a keen hunting desire among their bench-show contenders. This has also been the desire of the Britany spaniel breeders and among the enthusiasts of the various hound breeds.

Outstanding examples of dual-type breeding are the dogs owned by Dr. and Mrs. H. J. Zahalka of Minnesota. While the Zahalkas are enthusiastic bench-show fanciers and campaign their dogs fearlessly in these events all over North America, they are ardent hunters themselves and have an equal interest in field trials with the breed of their favorite, the German shorthair. Many bench-show champions have been bred in their kennels, and quite a number of field-trial titlists have come from this same establishment.

It is most unusual, however, for a single kennel to have TWO dual champions within its fences

## Test Your I. Q.

1. Where and when were the basic beginnings of the United Nations made?
2. Which of the "seven wonders of the ancient world" survives?



3. Who hit the longest home run on record? Where? When? How far?
4. How many men reported for duty to George Washington at Valley Forge?
5. How many of our Presidents were born in log cabins? Can you name them?

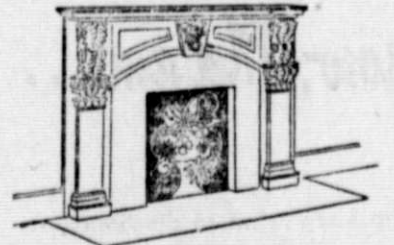


### To Close Fireplace—

MANY old homes have old-fashioned fireplaces which no longer are serviceable. They are a problem, being expensive to remove or put into working condition, and being drafty, dirty, and wasteful of room heat.

There are several ways to close the opening to shut off the draft, but making the closure both functional and attractive is a bit of a trick. The ideal solution is a panel which tightly closes the opening and which may be pleasingly decorated to heighten the interest in an otherwise dull location.

Many leading artists use Tempered Presdwood instead of canvas. Its qualities as a painting medium—permanence, absence of grain, durability,



non-splintering or cracking—are the same which make it widely used in home remodeling and new construction in residential, commercial, and industrial fields.

A Presdwood panel, then, used as a fireplace closure and painted or otherwise decorated combines function and beauty. Instead of a painting by some talented member of the family or friend, the panel may be covered with a blowup of a favorite snapshot. Decalcomanias are another alternative, or the smooth-surfaced material may be painted or enameled.

Since the artistic motif is involved, it's wise to have the panel easily removable so that the scene may be changed from time to time. The simplest way to install the quarter-inch panel for its dual purpose is to fasten a framework of 1x2 lumber in the opening and then attach the hard-board with roundheaded screws inserted through drilled holes at the corners and intermediate points.

at the same time. But in Dual Champion Schatz and Dual and International Champion Searching Wind Topper, the Zahalkas have accomplished the very unusual.

Schatz and Topper have rather similar field records, being the only German short-haired pointer dual champions to gain their field-trial titles by winning the derby, the nonwinner, the open all-age and the limited all-age stakes in that order.

Another dog that has won his spurs on the bench and in field trials and under the gun in the hunting field is the Britany spaniel Champion Mac of Paradise, owned by W. S. Oberlin of Illinois.

M. Oberlin says Mac is an exceptionally fine pheasant dog and about the best grouse dog he's ever gunned over. He has been a constant winner in field trials for Britany spaniels, and best of all, he has won a number of places in field trials competing against pointers, setters and other pointing breeds.



**POINTING OUT THE TROUBLE SPOTS**—American Secretary of State, John Foster Dulles, at right, points out the European trouble zones to Senator Alexander Wiley (R., Wis.), left, chairman of the Senate Foreign Relations Committee; and Foreign Aid Chief Harold Stassen. Since his appointment to the cabinet post, Dulles has visited many of the countries which are united against the threat of Red aggression.

## Ticklers

By George



"Read that again about Jack and the Beanstalk—It's inspiring—Thought provoking!"

## STRICTLY BUSINESS

by McFeatters



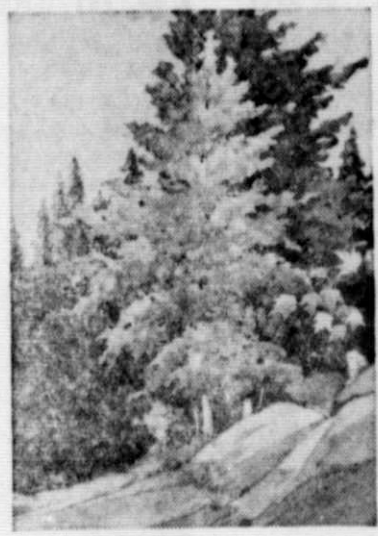
## THESE WOMEN!

By d'Alessio



"Well, to begin with, I'm a secretary!"

## DWARF MAPLE



Dwarf Maple  
©1952 National Wildlife Federation

The common name of dwarf maple might imply that this tree was really small. As a matter of fact it may reach a height of 30 feet and have a trunk diameter up to 1 foot. The branches are relatively small and upright. They are pale green to brown at first but by the end of the first half year have become a brilliant reddish brown. They may be somewhat angled and are smooth. Sometimes the tree appears as a many branched shrub if a tree can by definition be a shrub. It is probably because of this habit that we have the name dwarf maple.

The dwarf maple ranges from Montana to the Black Hills of South Dakota down to Nebraska through Colorado, Utah, Nevada to northern Arizona and New Mexico. It is found in the Siskiyou into Kern County, California, and within its range is found up to altitudes of 6000 feet in the northern part of its range and of 9000 feet in the southern part. It is commonly found along the banks of water courses in the Rocky Mountain area.

Like other maples, the dwarf maple has opposite leaves. They may be deeply 3-lobed or even 3-parted but in some the lobing is shallow. They are to 5 inches in diameter, a bright dark green above and considerably lighter beneath. They may be up to 6 inches long with a long or a short petiole. Sometimes they may take on a brilliant red color. The twigs form a reasonably popular browse for mule deer and mountain sheep and white-tailed deer have been known to eat them.

Some of the plants bear rather conspicuous fruits while others seem to bear none. This is because the pollen is usually produced on plants different from those bearing the fruits. This is the usual thing in this tree but not always the case.

The fruits are much like those of other maples, consisting of two-winged parts with the wings extending in directions opposite to each other. The wings of the fruit may be almost an inch long and may be rose colored in the summer and red in the autumn. The fruits mature in late autumn and if collected for planting will be found to run as high as 20,000 to a pound. Fruits are sometimes harvested to start new plantings where soil erosion is to be kept under control and where the browse may have value to wildlife. Under the name of "Rocky Mountain maple" it is sometimes raised in nurseries for sale as an ornamental.

The wood of the dwarf maple is heavy, hard, close-grained. The heartwood is light brown to white and the thick sapwood is usually lighter colored than the heartwood.

—E. Laurence Palmer.

Common belief that snakes travel by moving their ribs has been exploded by X-ray moving pictures showing the ribs to be stationary in the body under all methods of snake locomotion.

## Farmers Getting Less Of Consumer Dollar

The farmer's slice of the consumer's dollar continues to shrink as most retail food prices remain high while farmers' prices are lower says the Crop Reporting Service of the Wisconsin and United States Departments of Agriculture.

Prices of products sold by Wisconsin farmers during December averaged the lowest for any month in the past two years and farm products prices have decreased sharply in the last quarter of 1952. As a whole, farm product prices are six percent below a year ago. For the nation, the decline was even more for the past year—nearly 12 percent.

While farmers have been receiving lower prices for the things they sell, retail food costs during 1952 climbed to the highest point on record. This fall, retail food costs averaged 1 per cent above a year earlier and 10 per cent more than they were two years ago.

The continued high level of retail food prices has decreased the farmer's share of the consumer's dollar. For the nation as a whole, farmers now get 47 cents from the consumer's dollar spent for food. This is down 3 cents from a year ago when prices received by farmers averaged higher.

As farm product prices decline a larger share of the consumer's dollar spent for food usually goes for marketing charges. This continued high level of marketing costs stops retail prices from making the same decline as prices of most farm products.

Color perception is not confined to the higher mammals, says the National Geographic Society. Experiments have proved that even such reptiles as giant tortoises can distinguish between shades of green and blue.

Tin and rubber from Malaya have brought the British more U. S. dollars in the last few years than all of the United Kingdom's direct trade with America.

Poppies are cultivated in central France for their seeds, which produce not narcotics or pastry decoration but salad oil, says the National Geographic Society.

## ANSWERS TO Test Your I. Q.

1. At the Dumbarton Oaks Conference in Washington, from Aug. 21 to Sept. 28, 1944.
2. The Egyptian pyramids.
3. Babe Ruth, in 1919, during a game between the Boston Red Sox and New York Giants at Tampa, Fla. The ball traveled 587 feet.
4. 8200.
5. Three. They were Andrew Jackson, Abraham Lincoln and James A. Garfield.



**WHAT'S NEXT?**—Watching British blondes pass his cage in London's Zoo is the favorite pastime of Winnie, the zoo's Syrian brown bear. Our photographer tried to arouse Winnie's interest in the birdie but, as you can see, he was busy watching something else.

## Our Great America



## Raising the Drawbridge



## Behind The Scenes In American Business

By Reynolds Knight

NEW YORK—Financial observers in New York say the new year gives promise of an upturn in one important kind of income—dividends on corporate stockholdings. Dividend payments in January were 8 per cent higher than in January of 1952, a year which wound up with total dividend payments of \$9.3 billion.

If the excess profits tax is allowed to expire on schedule June 30, and if there is no drop-off in company earnings, a figure near \$10 billion is expected this year. This will be of importance to persons other than stockholders—and that group alone comprises some 6.5 million Americans. The psychological lift of a return to the traditional pay-out of some 75 per cent of corporate earnings in dividends will tend to make dividend recipients spend more freely of all their income, simply because they will feel wealthier.

**GOLDEN EGG DEPARTMENT**—Just how far the nation's poultry improvement program has gone in forming up farmers' power to purchase industry's goods was stressed in the recent Boston Poultry Show and Country Life exposition, now 105 years old. The Boston show offers national honors to winners in its keen competitions, and thus spurs dissemination of new advances in the science of poultry-keeping. Operators of the show give much credit for its success to such devices as the Hall of Fame, sponsored by the A & P Food Stores, where winning birds are enthroned as the climax of the exposition. The food chain sponsored the "chicken of tomorrow" program which has done much to boost the poultry industry's annual volume into the billions of dollars.

**THINGS TO COME**—A new windshield washing product, which neither freezes nor evaporates in use, is advertised to clean suicidal bugs off automobile glass without a trace... A British wrench grips round, square, or hexagon-headed nuts with equal firmness... New molding machines utilize hydraulic cylinders instead of mechanical jaws to line up die faces... A Harvard professor heads a firm which announces it has a process for tanning leather in minutes instead of weeks or months... A perforated galvanized pipe, and a fan for drawing air through it, are the essential parts of a new invention for cooling stored grain in bins... Rebellious against all the gadgets of modern cameras, a new 35-millimeter model has only time and shutter-opening adjustments.

**STORY OF RUBBER**—American industry is staging interesting shows to tell its story about industrial achievements to the public. At Chicago's Museum of Science and Industry, the B. F. Goodrich Company constructed a mammoth exhibit that tells "The Story of Rubber" with such visitor-controlled displays as a 60-foot-high guillotine that attempts to execute a Life-Saver tubeless tire to show how it safely withstands severe pounding from bumps and road shock, the world's first moving rubber sidewalk on which visitors can ride, and a machine that punctures a tubeless tire 2200 times without the tire's losing air. B. F. Goodrich's theory is this: Tell a group of people that a tubeless tire won't lose air when punctured with a spike, and they won't believe you. But let them do it themselves and they believe it the rest of their lives. The company feels that this exhibit, which took two years of thinking, planning and building, tells their story and how rubber contributes to a higher standard of living for the American people.

**FARMERS IN A HURRY**—Time was when the Midwest farmer took pride in the way he maintained the fertility of his acres by crop rotation and returning manure to the soil. He charged the enormous use of fertilizer by his cash-cropping Southern neighbor to shiftlessness as much as the lighter body of most Southern soil.

Now, having had the demands of the whole globe resting on him during the war—and much of it since as well—the Midwesterner's own acres are getting weary, and sales of fertilizer are mounting in the Corn Belt. Last year Ohio and Indiana went over the million-ton mark in fertilizer purchases, each for the first time.

Another factor is the growing preference of beginning farmers for quicker, if more costly, rebuilding of worn-out farmland. The patient sequence of plowing under cover crops is too slow, and in these days of high farm prices the cost of four-times-normal feedings is returned in crops.

**BITS O' BUSINESS**—Bill Schaden, a Muskogee, Okla., hotel manager, started a stampede to the Hotel Severs there when he started serving a four-course dinner built around roast turkey for a buck.

# MILLERS

## Furniture---Funeral Home

### always Dependable and Reasonable

**BIDS WANTED**  
EQUIPMENT STORAGE BUILDING FOR WASHINGTON COUNTY HIGHWAY COMMISSION, TWO STORIES 152' 8" x 115' 8" REINFORCED CONCRETE, STRUCTURAL STEEL AND BRICK CONSTRUCTION.  
The County Clerk at West Bend, Wisconsin will receive Sealed bids on the above structure. All bids will have to be in County Clerk's Office before 10:00 A. M. April 16, 1953 at which time all bids will be opened

and publicly read aloud. All bids shall be made subject to the provisions of Section 66.29 of the Wisconsin Statutes (1951) and the County Board of Supervisors of Washington County, Wisconsin reserves and has the right to reject any and all bids at any time.  
Separate bids according to architects specifications and plans will be received on following items; Contractor may figure on more than one item but must break his bid down according to following items:

1. Excavating, Concrete and Mason Work
  2. Plumbing
  3. Sheet Metal
  4. Carpenter Work
  5. Electrical
  6. Painting
  7. Metal Roof Deck
  8. Structural Steel
  9. Roofing
  10. Overhead Doors
  11. Heating
- A certified check of 5% of bid or a 100% bid bond must accompany each bid on the following items only. Checks and bonds will be returned when contracts are signed or bids are rejected. This will be before June 15, 1953.  
A completion bond will be furnished by Contractor receiving the contract on following items only:

1. Excavating, Concrete and Mason
  2. Overhead Doors
  3. Heating
  4. Structural Steel
  5. Metal Roof Deck
- Plans and Specifications can be received at office of Verner H. Esser, Architect, 4061 N. Prospect Ave., Milwaukee, or at office of Highway Building, West Bend, Wisconsin. Dated this 3rd day of March, 1953. Published by the authority of the County Board of Supervisors of Washington County.  
Anton P. Staral,  
County Clerk

#### TAX, ETC.

**IN THE MATTER OF THE ESTATE OF Mary Ramel, also known as Marie Ramel, Deceased.**

Notice is hereby given that at a term of said Court to be held on Tuesday, the 31st day of March, 1953, at 10 o'clock in the forenoon of said day, at the Court House in the city of West Bend, in said County, there will be heard and considered:

The application of Herbert Haack, administrator of the estate of Mary Ramel, also known as Marie Ramel, deceased, late of the village of Kewaskum, in said County, for the examination and allowance of his final account, which account is now on file in said Court, and for the al-

lowance of debts or claims paid in good faith without filing or allowance as required by law, for the determination of who are the heirs of said decedent, and for the assignment of the residue of the estate of said decedent to such persons as are by law entitled thereto; and for the determination and adjudication of the inheritance tax, if any, payable in said estate.

Dated March 3, 1953.  
By Order of the Court,  
Milton L. Meister, Judge.  
Bartelt & Bartelt,  
Attorneys & Counsellors  
Theatre Building,  
Kewaskum, Wisconsin.  
Attorney. 3-6-53

The 12th annual Milwaukee Sentinel Sports Show opens Saturday at 1 p. m. in the Milwaukee arena and auditorium. Stage and tank shows are presented twice daily at 3 and 9 p. m. throughout the nine day event which closes Sunday, March 29.

## INSURED AUCTION JACOB BRUESSEL FARM

½ mile south of Kewaskum, 200 yds. west of Hy. 55, 6 miles north of West Bend on Hy. 55  
Wednesday, April 1—1:00 p. m.

All personal property and the farm will be offered for sale on the day of the sale.  
Homestead consists of 73 acres (70 acres workable), 11 room brick house (hot water heat with stoker, bath & toilet), 36 ft. by 70 ft. barn (20 stanchions and well in barn), chicken coop, 1 machine shed, 36 ft. x 58 ft.; one shed 14 ft. x 22 ft., one brick shed 24 ft. x 18 ft., one brooder house, plus 40 acres ¼ mile west of Hwy. 55 with no buildings (20 acres workable and 20 acres of pasture with a good creek running through the middle of the land).  
**HOMESTEAD MAY BE BOUGHT WITH OR WITHOUT 40 ACRES CATTLE**—15 milk cows (11 fresh, 4 to be fresh by day of sale), 1 2-yr.-old heifer, 1 yearling bull, 3 heifers (3 to 4 mos. old), 100% clean herd, 2 brood sows, 2 horses (1 team of black horses 11 & 12 yrs. old & 1 bay horse 12 yrs. old).  
**MACHINERY**—One International tractor on steel, tractor plow, 2 bottom 16" manure spreader (International), silo filler, corn husker, corn binder (International), grain bind-

er, New Idea hay loader, side delivery rake, dump rake, 2 Van Brunt seeders, corn planter, mower, sulky plow, potato planter, land roller, field cultivator, 3 wing spring tooth, one drag, circle saw on truck wagon, 2 wagons and bob sled, 500 lb. platform scale, one 3" belt 30 feet long, milking equipment, 20 ton loose mixed hay, 600 bu. oats (Bondada), 2 ton cob corn, one straw stack and other items too numerous to mention.  
First bidding on the farm will be held at 2:00 p. m. Terms: 1/3 down, bal. in 90 days (privilege of renewing for 90 days more). All feed must be paid in cash. All sums of \$25 and under cash. FARM—1/3 down on day of sale—1st mortgage can be arranged.  
Col. Lester Dreher,  
Tel. 98F2, Kewaskum  
Herman Krueger,  
Auctioneers & Brokers  
Member of Association of Wisconsin Auctioneers  
Cashier—Wayland Tessar,  
Bank of Kewaskum.  
Clerk—John Van Blarcom.

## AUCTION Wednesday, March 25—1 p. m. sharp

**COMPLETE SELL-OUT OF PERSONAL PROPERTY**  
Account of not getting any farm labor, I am forced to sell all my personal property.  
**LOCATION:** On east end of Village of Kewaskum, Follow Highway 25 to East Water Street. See auction sign.  
**30 HEAD OF FINE HOLSTEIN COWS**  
All fresh, some with calves aside of them. All cattle TB and Bang's tested. A few springers, 9 Holstein heifers, bred, 15 and 16 months old; 8 yearlings, open; 2 Angus heifers, bred; 2 Holstein service bulls, 13 and 15 months old. 20 100 lb. shoats.  
**MACHINERY**—New Case corn chopper, 1 yr. old, with hay snoot; small silage blower with 40 ft. pipe, 1 yr. old; 16 bar Case grain drill, 1 yr. old; Case corn drill for tractor,

1 yr. old; Ford tractor with plow and cultivator, 1 yr. old; W30 tractor on new rubber, in the best of shape; John Deere side delivery rake for tractor, 2 yrs. old; M & M side delivery, good shape; new steel 3 section drag, 1 yr. old; John Deere spring tooth for tractor, 1 yr. old; two bottom P & O plow, McC grain binder, double unit McCormick-Deering milk machine, electric hammer mill, wagon on rubber, 1 yr. old; wagon on rubber, 2 corn cultivators, 2 hay loaders, 2 Idea Manure spreaders, potato digger, land roller, 1937 Chevrolet ½ ton pickup, good shape; 15 ton of first cutting alfalfa hay, 5 ton of good ear corn.  
**OWNER: K. A. HONECK, SR., KEWASKUM, WISCONSIN**  
Auctioneer: Col. Lester Dreher  
Cashier: Paul Landmann,  
or Bank of Kewaskum

## INSURED AUCTION CECIL SCHNEIDER FARM

(Formerly the Ben Schneider Farm)  
CECIL SCHNEIDER PERSONAL PROPERTY  
1 mile west of Fillmore, County Trunk H, 5 miles east of Kewaskum, on County Trunk H  
March 30—1:00 p. m.

**18 HEAD OF CATTLE, HOLSTEINS & GUERNSEYS MIXED.** 100% clean herd. 10 milk cows, all fresh; 6 2-yr.-old heifers, springing; 1 2-yr.-old bull, 1 bull 6 mos. old.  
Allis-Chalmers WC tractor on rubber with cultivator, Allis-Chalmers tractor plow, Farmall tractor on steel with cultivator, new M & M grain drill with fertilizer & grass seed attachment on rubber, New Idea hay loader, rubber tired wagon, silo filler (Gehl), John Deere mower, manure spreader, quack-rooper, 3 section spring tooth, grain binder, saw rig, butcher kettle, platform scale, Surge milk machine & 2 buckets, milk cans, 1½ ton truck.

50 ton hay, mixed; 4 ton straw, 350 bu. oats, Branch & Bonda; 2 ton cob corn, 10 ft. of silage with corn in.  
Other items too numerous to mention.  
TERMS: 1/3 down, bal. in 90 days, 5% interest. All sums under \$25 cash. 90 days renewal if necessary. All feed CASH. All items must be settled for on day of sale.  
Col. Lester Dreher, Auctioneer  
Tel. 98F2, Kewaskum  
Bartelt Real Estate Agency  
Member of Association of Wisconsin Auctioneers  
Bank of Kewaskum  
Cashier—Wayland Tessar  
Clerk—John Van Blarcom

The ultimate in fine performance! Richly styled in sage green with sleek fin design. Has built-in antenna, new "Audi" P.C. Electronic unit. UL Approved \*including rectifier.



**CORONADO "Moderne"**

**\$24.95**

- 4" Alnico V PM Speaker
- 5-Tube Compact Chassis
- Year Warranty on Tubes

**GAMBLES AUTH. DEALER**  
Frank Felix Kewaskum

**"DID YOU HEAR?"**



my husband is working at the

## ALUMINUM COMPANY

When Bob heard about the new production opening, he went right down and signed up. Now he has steady work, regular hours and brings home a paycheck every other Thursday. There are lots of extras—like insurance, paid holidays, vacation time, and a liberal hospitalization policy.

And he says everybody at work is so friendly too. After a few days on the job, I could tell he felt like he had been there for years. Best of all, he didn't need any previous experience. He's being paid regular wages while he's learning. Be sure to tell Jim to go to the Personnel Office as soon as he can. And the sooner—the better.

## WEST BEND ALUMINUM CO.

WEST BEND, WISCONSIN

### Auction Sale Henry Rauch Estate Sun., Mar. 22 1:00 p. m.

One mile south and one mile east of Lake Bernice, 3 miles north of Kewaskum on Hwy. V, then 1½ miles west. 4 miles south of Campbellsport on Hwy. V, then 1½ miles west.

Ford 2-door sedan, Bolens garden tractor, new, with garden equipment; Mercury 3½ H.P. outboard motor, like new; one 15 ft. boat in good condition, Barton washing machine, several bird houses, fishing equipment, some household goods, many carpenter tools, saws, wrenches, drills, garden tools, some lumber, 300 lbs. popcorn, many small articles too numerous to mention.  
Terms: Cash.  
Henry Rauch Estate  
Lester Rauch, Adm.  
Richard Hodge, Auctioneer

**IN MEMORIAM**  
In loving memory of our husband, father and grandfather, Paul Bachhaus, who died one year ago, March 22, 1952:  
In the graveyard softly sleeping  
Where the flowers gently wave,  
Lies the one we loved so dearly,  
In his lone and silent grave,  
Father, you are gone but not forgotten—  
Never will your memory fade;  
Sweetest thoughts will ever linger  
'Round the grave where you are laid.  
We loved you, yes, we loved you,  
But the Saviour loved you more,  
And so the angels sweetly called you  
To that bright and happy shore.  
It was hard to part with you,  
Oh, so sad to see you die;  
But then we'll try to meet you  
Some sweet day by and by.  
Sadly missed by his wife, son-in-law and daughter, Mr. and Mrs. Albert Stange, and children.

**CARD OF THANKS**  
To our relatives and friends who expressed their sympathy in so many ways during our bereavement, the death of our mother, Martha Baumann, we extend our heartfelt thanks. Special thanks to Rev. G. Kankeas for officiating, choir, pallbearers, drivers, donors of floral pieces and memorial tributes, traffic officers, Miller's and all who showed respect.  
Walter Baumann family  
Michael Krueger family



*Your boy's all right now, Ma'am...*

It's fortunate that someone was around who knew what to do. Someone trained by the Red Cross. But it's not hard to understand—

Millions of Americans have had Red Cross training in life-saving, swimming, and first aid. It may mean the difference between life and death to have one of them around in an emergency.

But this work can go on only with your help. You are the Red Cross. By making this training possible, your contribution of money saves lives just as surely as the man on the scene. Give generously.

**ANSWER THE CALL**

**There is still time for your contribution**

**KEWASKUM STATESMAN**  
PUBLISHED WEEKLY  
D. J. HARBECK, Publisher  
W. J. HARBECK, Fd.-Business Mgr  
Entered as second class matter Oct. 17, 1896, at the Post Office at Kewaskum, Wis., under the Act of Congress on March 3, 1879.

SUBSCRIPTION RATES:  
One Year \$2.50  
Six Months \$1.25  
Single Copy .05

**Around The Town**

—Paul Belger spent the past week visiting relatives in Minnesota.  
—Mr. and Mrs. David Bartelt and daughter left on a business trip to Florida.  
—MODERN PAINLESS CHIRO- PRACTIC. ROBERT G. ROBERTS, D. C., 702 ELM ST., WEST BEND, WIS. 7-27-14  
—Mr. and Mrs. Don Lampi, Mr. and Mrs. Al Wegner of Sheboygan visited at the William Guenther

**THOENNES MFG. CO.**  
Manufacturers of  
**CHOPPER BOXES**  
ALSO  
General Blacksmithing  
and Repairing  
We Specialize in Plow Points  
Located at intersection of Hwys  
28 and 55 6-13

home Sunday afternoon.  
—YES, It's Miller's at Kewaskum or quality home furnishings at most reasonable prices. Open daily until 6, Fridays until 9 p. m. Free deliveries.

—Lenten reading at its best for youngsters, is offered in a "A Child's Life of Jesus" by Fulton Oursler. This beautifully illustrated narrative by the author of "The Greatest Story Ever Told," is now

appearing in the Milwaukee Sentinel daily and Sunday through Easter.—adv.  
—See the Timber Toppers at the Sentinel Sports Show in the Milwaukee Arena, March 21st to 29th. Read the Sports and Vacation Show Souvenir Edition with your Sunday Milwaukee Sentinel, March 20.—adv

Classified ads in the Statesman are business getters.

THROUGH THIS NEWSPAPER YOU CAN

**SAVE**  
FROM \$1.77 TO \$5.00



ON COLLIER'S... The Nation's Most Colorful and Interesting Weekly  
**60 WEEKS FOR ONLY \$4.00**  
Take advantage of this money-saving offer! Through this newspaper get 60 weeks of Collier's Magazine mailed to your home for only \$4.00—you save from \$1.77 to \$5.00!  
Exciting fiction... revealing articles... cartoon chuckles... short subjects and lavish Color Camera pages are all yours in Collier's.  
Subscribe today! Limited time only!

MAIL OR BRING COUPON TO THIS NEWSPAPER TODAY!

Remember  
**60**  
WEEKS OF  
COLLIER'S  
**\$4.00**

Gentlemen: Please send Collier's Magazine for 60 weeks. I am enclosing \$4.00.

Name \_\_\_\_\_  
St. or R.F.D. \_\_\_\_\_  
Town \_\_\_\_\_ State \_\_\_\_\_

**Beef**  
by the  
**Quarter**  
or  
**Side**  
BEST QUALITY  
BEST PRICES  
**Stellpflugs**  
Finer Meats  
Since 1879

Endlich's says  
**It's a Fact!**



**And We Can Prove It**  
Lightning Does Not Zigzag  
Lightning curves, twists, meanders and branches, but it does not turn in acute angles or zigzags. In 1856 James Nasmyth, a Scottish engineer, called this fact to the attention of the British Association for the Advancement of Science, after observations over a period of years. 1. "Uncommon Knowledge". Geo. W. Stimpson.  
Watch ENDLICH'S for excellent specials that will save you money.

**ENDLICH'S**  
Jeweler and Optometrist  
ESTABLISHED 1906  
KEWASKUM, WIS.

**Your One-Stop Shopping Center**

**Red Bell Market**  
**Roundy's Better Foods**  
Old Time Coffee, 1 lb. **77c**  
Maxwellhouse Coffee, 1 lb. **85c**  
Pillsbury's Best Flour, 50 lb. sack **3.98**  
70c worth of coupons in every bag  
Cane Sugar, 5 pounds **50c**  
10 pounds **1.00**  
Cigarettes, all popular brands, carton **2.10**

**Low Prices Every Day**  
Easter Candies, Fresh Fruits and Vegetables

**L. ROSENHEIMER**  
Department Store Kewaskum

**WANTED...**  
**ONE TRAPEZE ARTIST**

... to pin up the family washing on back-yard clothes lines.  
DO NOT APPLY TO THE MANY HAPPY OWNERS OF AN ...

**Electric Clothes Dryer**  
THE ELECTRIC COMPANY

**Bring in Your McCormick Milker**  
FOR  
**FREE INSPECTION**  
Special Milker Service Day at our store  
**Wednesday, March 25**  
**A. G. Koch, Inc.**  
KEWASKUM, WIS.

**Elsie's Flower Shop**  
Time to Think of Easter!  
LEAVE YOUR ORDERS EARLY FOR  
Potted Plants  
Hydrangeas  
Gardenias  
Daffodils  
Hyacinths  
Easter Lilies  
Rambler Roses  
Azaleas  
Tulips  
Cinerarias  
Gloxinias, Fresh Cut Flowers  
Corsages Made to Order  
Table Arrangements

**WORTH MORE** when you buy it,  
**WORTH MORE** when you sell it!



With several fine optional at extra cost. Equipment, accessories and price subject to change without notice.

Its 41 "Worth More" features offer you a whole new standard of driving!  
Fords bring the greatest portion of their original cost when you sell them... greater than any other car at any price. And no Ford ever held a greater promise of long-lived value than this sparkling new 1953 Ford.  
You get road-ruling "Go" in Ford's V-8 and Six engines. You get Ford's new Wonder Ride for a new concept of riding comfort. In Ford's Crestmark Body you get "living" room that's the finest, most comfortable in the low-price field. And you get the style-setter! No wonder they're calling this '53 Ford the New Standard of the American Road.  
SEE IT...  
VALUE CHECK IT...  
TEST DRIVE IT!  
You can pay more but you can't buy better.  
**'53 FORD** Join the swing to FORD!  
"See your Nearest Ford Dealer, Wisconsin's Finest Automobile Dealer"  
Hear Your Road Report, 5 Minutes Before Noon—Monday, Thursday, Saturday, WTM

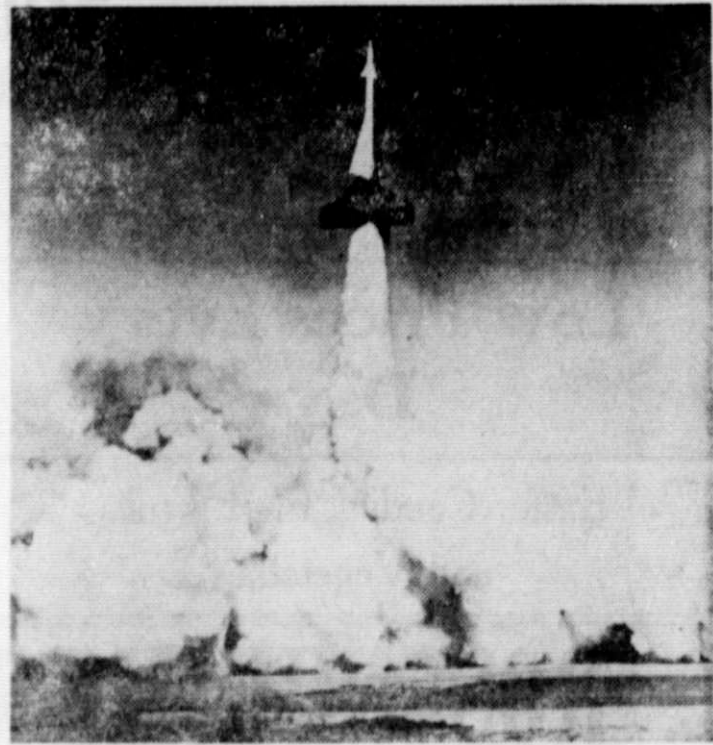
That's how I pay my bills...by check  
**IT'S SO EASY!**  
**Bank of Kewaskum**  
Kewaskum, Wisconsin  
Member Federal Deposit Insurance Corporation

**IGA**  
**Grocery Specials**  
SILVER BUCKLE WHOLE BEETS, 20 ounce can, 2 for **29c**  
CURTIS BRAND TOMATOES, 16 ounce can, 2 for **29c**  
HAWAIIAN HALFSLICE PINEAPPLE, 20 ounce can, 2 for **49c**  
ROYAL GUEST CATSUP, 12 ounce bottle, 2 for **29c**  
SAVEALL WAX PAPER, 100 foot roll **19c**  
BROADWAY PEAS, 10 1/2 ounce can, 2 for **19c**  
IGA GRAPE JAM, 12 ounce glass **19c**  
IGA TOMATO JUICE, 46 ounce can **29c**  
REAL GOLD ORANGE BASE, 6 ounce can, 2 for **29c**  
MT. WHITNEY RIPE OLIVES, 6 1/2 ounce can **19c**  
IGA SALAD DRESSING, Quari jar **48c**  
IGA SEEDLESS RAISINS, 2 pound bag **35c**  
**Marx I.G.A. Store**  
Kewaskum, Wis.

For artificial breeding to quality Holstein, Guernsey, Brown Swiss, and Aberdeen-Angus sires, get  
**EXPERT and EFFICIENT SERVICE**  
by EXPERIENCED Technicians  
Call **E. C. B. A. C.**  
East Central Breeders Ass'n Co-op  
\$6.00 per cow  
Phones:  
Kewaskum 92 Allenton 30-F-12  
West Bend 937  
Campbellsport 44F11  
Waubeka 65  
Lloyd Beckhaus  
Cyril Westerman  
Charles Foley  
Eugene Bingen



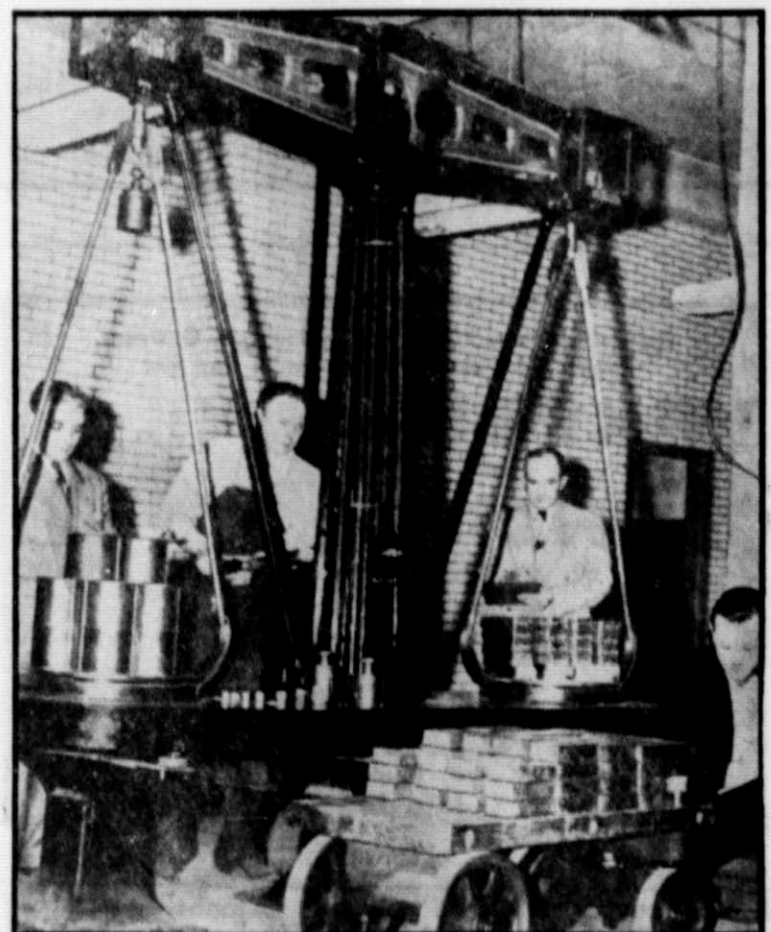
**NEW LAMPS FOR OLD**—Recharging cast-off fluorescent light tubes has become a thriving business for Bernard J. Patton of Los Angeles, Cal. He fits the dead tube in a machine seen above and approximately 80 per cent of them come out with 2000 hours added life in them. Patton claims he does not understand why.



**AN EXPERIMENTAL GUIDED MISSILE** is fired by the Army at White Sands, N. M. This missile was the forerunner of modern anti-aircraft weapons which have strengthened the defenses of the United States against enemy air attack.



**LAUGHING STOCK**—Chuckling over their "lucky find" are Barbara Schreiber, 2, at left; her mother, Mrs. Lyle Schreiber; and Susan, 3, of Cleveland, Ohio. The find, 3000 shares of worthless railroad stock, is heaped in their laps. Their husband and father, a 33-year-old machinist, found the stock certificates in a vacant lot. A broker told him they were for a bankrupt company and that the present railroad is run by a reorganized firm. Susan calls it "funny money."



**NO NICKS PLEASE**—Well aware that a deep scratch would scrape off a lot of valuable metal, gold-bar counters and weighers in New York vaults check government-owned gold carefully. The 24-carat bricks are balanced delicately as the gold is assayed following orders from Secretary of the Treasury George M. Humphrey. Seen above are William Frazzitta, at left; John Redmond; Fred Reitano; and Vincent Lundy. A truckload of bars is at right.

**Reminds Farmers Of Rules For Cattle Sales**

With the approach of the livestock auction season comes a reminder from the Wisconsin Department of Agriculture on regulations affecting the movement and sale of cattle.

Dr. H. J. O'Connell, Chief of the Livestock Sanitation Division for the department, listed the following suggestions for farmers planning to move or sell livestock:

If a farmer is planning an auction sale of his cattle he should have the tests, required by law, made soon enough so that the sale can be held on the scheduled date.

In cases where the sale involves one-third or more of the herd, all of the animals offered for sale must have passed a negative test for TB and Bang's within 30 days prior to the sale. A copy of this test must accompany each animal sold.

If the tests show the presence of TB infection, the entire herd would have to be quarantined until it had passed a completely negative test.

If cattle are to be sold or if they are to be transferred from one place to another, they must be accompanied by a report of a complete negative Bang's test made within 30 days of the sale or movement. This law applies even if the sale or transfer involves only one animal. Whether the herd is on Brucellosis control Plan A or Plan B must also be stated in the report.

For the sale or movement of calves under 4 months of age and steers, a Bang's test report is not required. The regulations do not effect official vaccines not over 24 months of age without history of abortion if accompanied by an official calfhood vaccination report.

If a herd has been certified by the Department of Agriculture to be Brucellosis free, the animals may be sold or transferred if they are accompanied by a report of a negative Bang's test of the entire herd made within 12 months.

Cattle cannot be sold or moved on the basis of the results of a milk Ring test but must be blood tested. Having a herd on Bang's control Plan A does not mean that the animals can be moved or sold without these tests.

Farmers desiring to move or sell livestock should consult their local veterinarian or contact the Division of Livestock Sanitation regarding the necessary procedure to follow. The local veterinarian is familiar with the laws and regulations pertaining to the movement of livestock and is in a position to advise and help farmers.

The proper control of livestock movement is essential if we are to keep the spread of animal diseases to a minimum.

**A "SLIGHT" ERROR**

Chicago, Ill. — When William Turner looked at his pay check for 26 hours of part-time work at The University of Chicago, he found he had been paid \$8,000,000 too much. The check was made out for \$8,000,031.70—the \$31.70 was the correct amount.

**STRICTLY FRESH**

A CROOK complained about the jail's bean diet but refused to be extradited till shown a fake home-town jail menu. His first meal back home was a beef sandwich instead of roast chicken. Bet now he's beefing about his beef!

Sliding into the river, an empty Milwaukee, Wis., car was pulled to shore by a fire tug named Deluge. Bet the owner flooded Deluge with thanks!



Library fine collectors in a California town opened a young lady's letter enclosing \$5 for "One Night of Love." She meant an overdue library book about music. To the boys it was just a sweet note turned sour.

According to news dispatches, an English lady celebrating her 104th birthday forgot her age. Heck, we know women a lot "younger" who do that.

A politician stated taxes on telephones more objectionable than those on newspapers. Could it be because telephones never criticize but only repeat what they hear?

Queen Victoria's Diamond Jubilee in 1897 was observed with fireworks displays throughout the British Empire on an unprecedented scale. Fireworks sent from London to Blantyre, Nyasaland (Southeast Africa), traveled through wilderness 300 miles from the mouth of the Zambezi River by cart, canoe, and on the heads of porters to be fired on the scheduled night before a huge crowd of astounded tribesmen.

Passion plays of the 15th century were so well attended that armed bands of citizens were required to patrol deserted streets during performances in order to protect the property of the theatergoers, says the National Geographic Society.

**HIGH JINKS IN THE ANIMAL KINGDOM**

A 7x8-inch Brainerd egg weighed in at six ounces, about three times normal weight . . . A calf normal in every other way was born on the Hickman farm at Ellsworth with only three legs—the left front missing . . . A stray black lamb joined a dog and a cat as pets in the James Kelleher home, West St. Paul . . . A fast-flying cock pheasant broke a \$100 thermopane window in a Fairmont home . . . Thirteen pups born to Mrs. Gordon Burbach's pet are believed to have set a Northfield record.

Ocean steamers can sail 2,000 miles up the Amazon River from the Atlantic Ocean to Iquitos, Peru.

**Date Pudding**

2 1/2 tablespoons cornstarch  
1/4 cup sugar  
1/2 teaspoon salt  
2 cups milk scalded  
2 eggs slightly beaten  
1 tablespoon butter  
1 teaspoon vanilla  
3/4 cup dates chopped  
1/3 cup chopped pecans

Mix cornstarch, sugar and salt; gradually add scalded milk and cook in double boiler until thick. Add small amount of hot mixture to eggs. Stir into hot mixture. Cool until thick, stirring constantly. Remove from heat; add butter and vanilla. Cool. Stir in dates and nuts. Serve with whipped cream.

**OLD TIMERS MAKE THE NEWS**

At a vivacious 68, Mrs. T. S. Johnson rounds out 45 years as writer for the Albert Lea Evening Tribune of the news of the London, Freeborn county, community . . . Mrs. Jennie Stevens Anderson of Minneapolis is still a subscriber to the Clarkfield Advocate for which she was a news writer in 1893 . . . At the 25th anniversary of the Willmar Daily Tribune were present three guests who were "charter subscribers" when Dr. Victor E. Lawson, still the publisher, launched the newspaper as a weekly in 1895.

If you pour paraffin over the bottom of the garbage container it will help to prevent odors and keep the container from rusting.



**THOSE WERE THE DAYS**



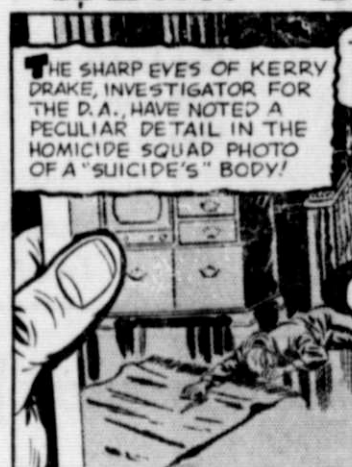
**But NOW-WOW!**



By ART BEEMAN



**KERRY DRAKE**



**MARY WORTH'S FAMILY**



**HAIR BREADTH HARRY**

